

# NOTICE OF REGATTA 2021



## **Sonata Yacht Association of Victoria 2021 Regatta** *and*



## **Ultimate Yacht Association 2021 Regatta**

*hosted by*



## **Geelong Trailable Yacht Club**

*On the waters of Corio Bay off St Helens Boat Harbour*

**Saturday and Sunday  
20<sup>th</sup>. and 21<sup>st</sup>. February, 2021**

Issue Date: 14<sup>th</sup>. January 2021

The organising authority shall be the Geelong Trailable Yacht Club Inc.

## 1. Invitation

Further to the memorable combined regattas conducted by GTYC for SYAV and UYA, we again return to St Helens Boat Harbour and the waters of Corio Bay. You are warmly invited to join the combined fleet again in 2021.

In planning this event our aim has been to provide again in 2021:

- A combined fleet of Sonatas and Ultimates, with opportunities to meet and mingle.
- A weekend of racing (spinnaker or no spinnaker) for all levels of sailing experience and expertise.
- An opportunity to encourage our younger members : children and grandchildren and friends
- A chance for everyone to win (something)
- Good sailing with competition, variety and fun.
- An enjoyable social Saturday evening roast meal.
- An event that is affordable.

GYTC have run excellent racing series in past years and we look forward to their warm hospitality again.

2. **Accommodation** As the upgraded St Helens boat harbour is now a pleasant spot to overnight many will no doubt choose this option. Arrival on Friday night is an option. Floating pontoon jetties, hot showers available. Alternatively there are motels nearby.

## 3. Programme summary :

### Saturday 20<sup>th</sup>. February, 2021

Briefing	0930
Three Races	1030 to 1600 with a lunch break ashore
Harbourside roast dinner	1900
Interim Results	2000

### Sunday 21<sup>st</sup>. February 2021

Briefing - Sternchaser	0900
Sternchaser	0940 to 1245
Results and Presentations	1400

## Retrieve and Pack up

## 4. Entry Form and Sailing Instructions

The Entry Form attached shows costs. You will be contacted to register your interest in participating. [Sailing Instructions](#) will be sent to you and will also be available on the Association website and on the GTYC website ([gtyc.com.au](http://gtyc.com.au)). **Please lock-in the date now!**

## 5. Course Diagrams and Safety Checklist are included for information.

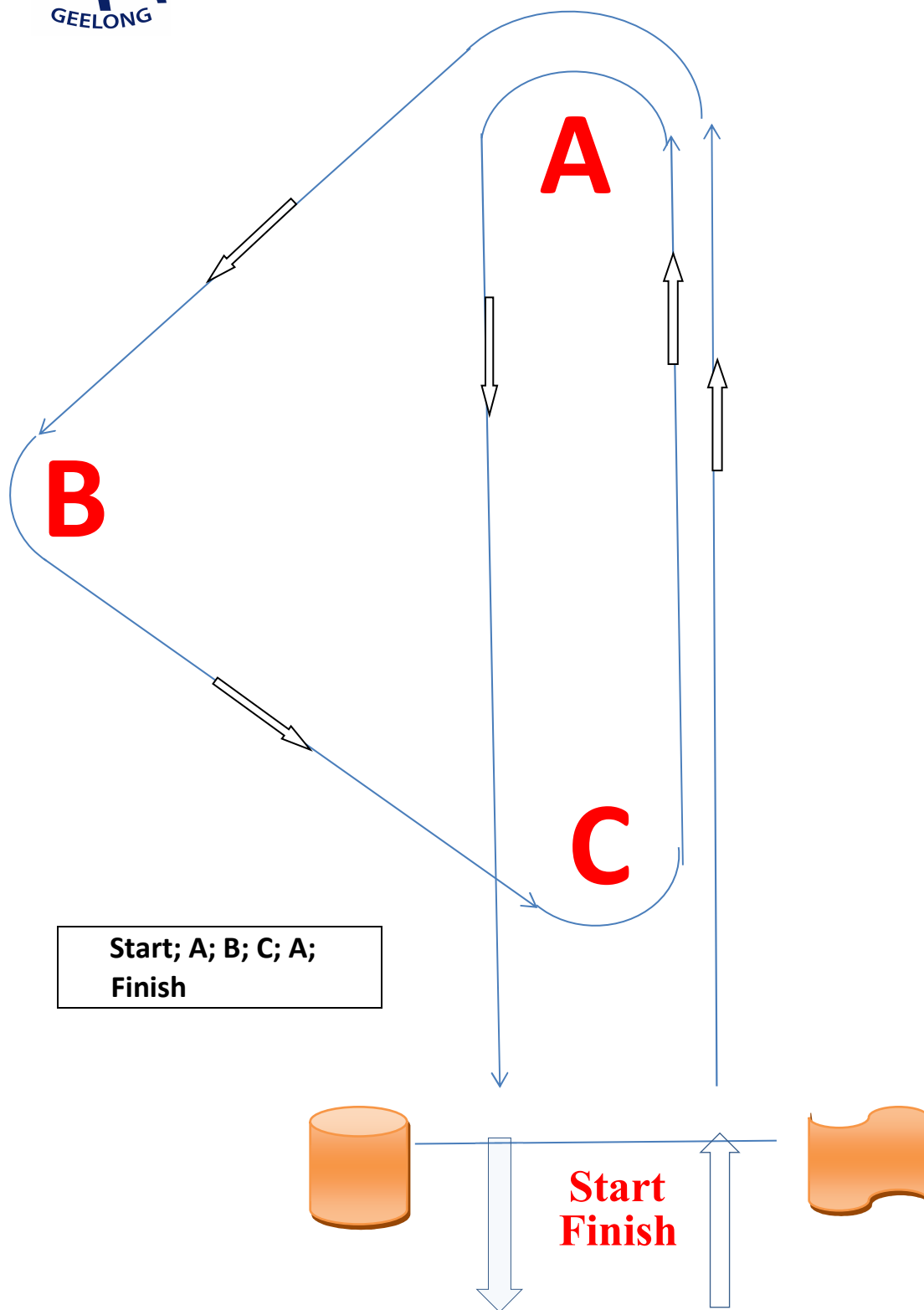
6. **COVID Rules** will be reviewed in the days before the event, initially including:
- a. Do not compete if you have symptoms, are waiting for a test result or have had contact with a known infected person
  - b. Wear masks wherever possible
  - c. Maintain social distancing wherever possible
  - d. Utilise hand sanitising agent in the vicinity of the clubhouse

## 7. Contacts

<b>GYTC:</b>	<b>John Mole</b> (Principal Race Officer)	<b>0411 142 917</b> <a href="mailto:jamole64@bigpond.com">jamole64@bigpond.com</a>
<b>SYAV</b>	<b>Warren Dickins</b>	<b>0419 514 351</b> Warren.Dickins@gmail.com
<b>UYA</b>	<b>Andrew McKenzie</b>	<b>0419 841 380</b> <a href="mailto:landymac1@bigpond.com">landymac1@bigpond.com</a>

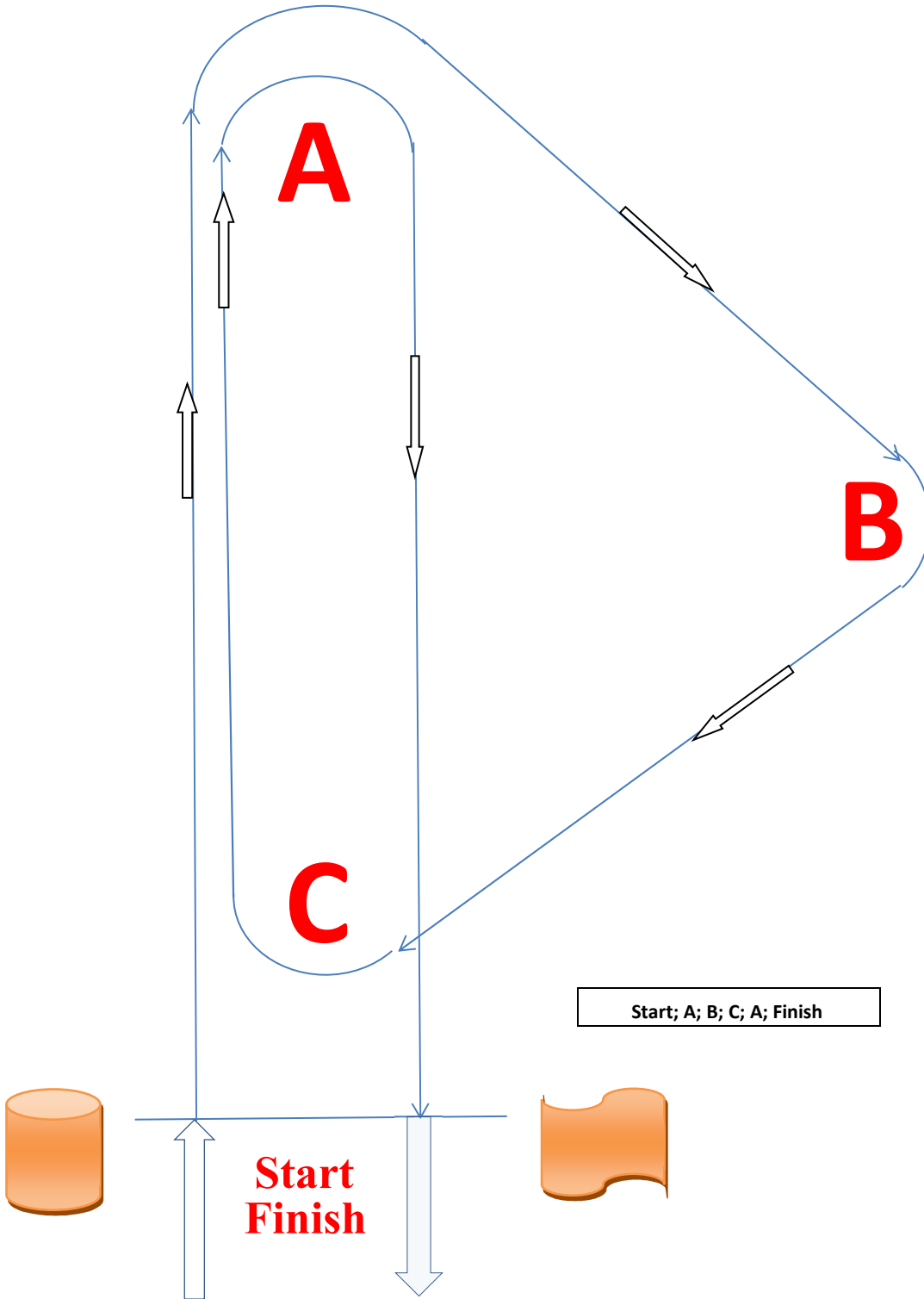


# Port Course





Starboard  
Course

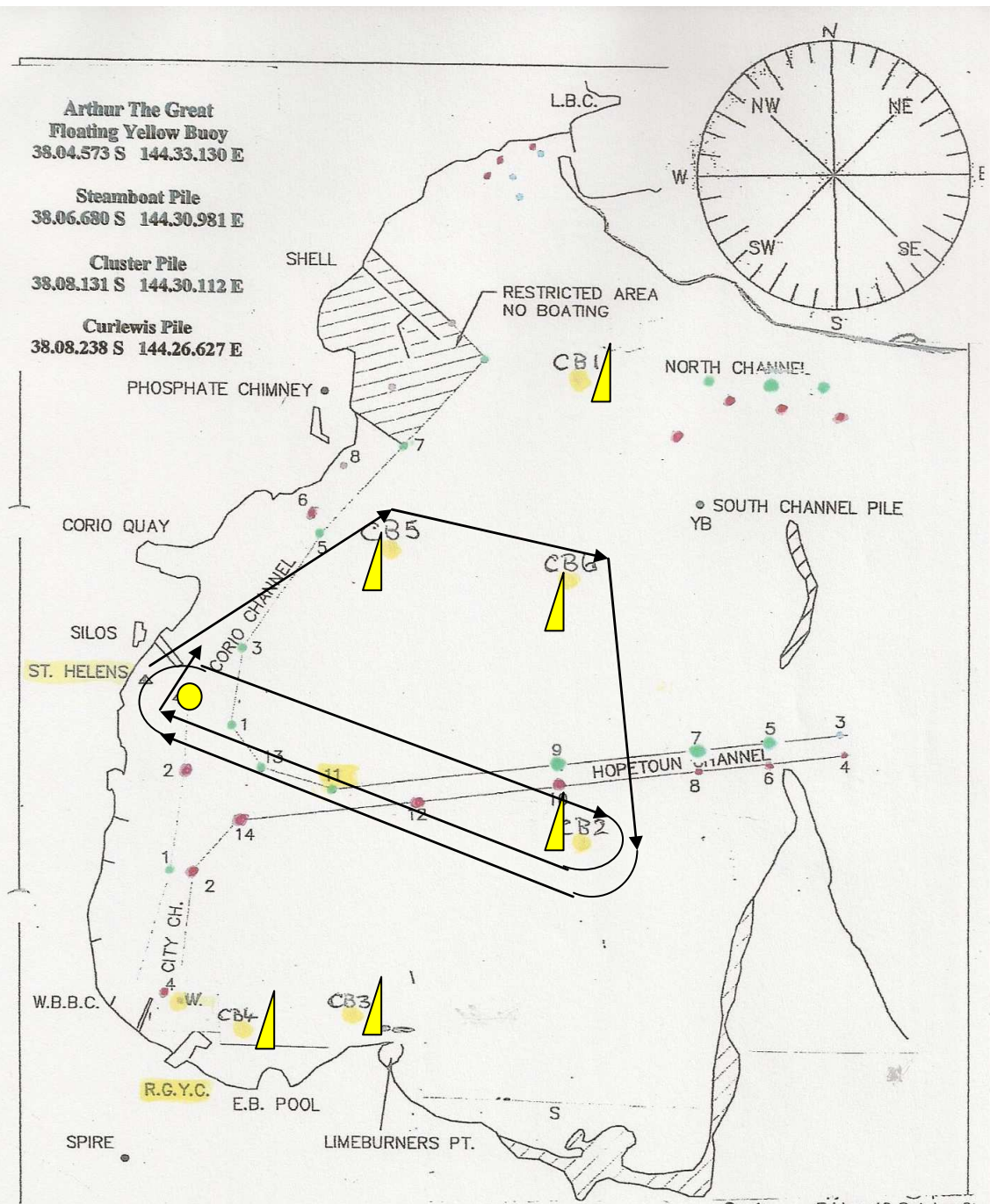


**Arthur The Great**  
**Floating Yellow Buoy**  
 38.04.573 S 144.33.130 E

**Steamboat Pile**  
 38.06.680 S 144.30.981 E

**Cluster Pile**  
 38.08.131 S 144.30.112 E

**Curlewis Pile**  
 38.08.238 S 144.26.627 E



**North Channel Piles**  
**RED West lead** 38.05.757 S 144.24.767 E  
**RED East lead** 38.06.083 S 144.26.201 E

**CB Locations**  
**CB1** 38.05.558 S 144.24.201 E  
**CB2** 38.07.616 S 144.24.181 E

**Sent:** Friday, 12 October 21  
**Subject:** GPS positions for me  
**CB3** 38.8.457s 144.22.879e  
**CB4** 38.8.525s 144.22.140e  
**CB5** 38.6.236s 144.22.767e  
**CB6** 38.6.484s 144.24.200e

Regards Jim Bland

**Sternchaser: Start; CB5, CB6, CB2, St. Helens, CB2, Finish**

## GEELONG TRAILABLE YACHT CLUB

### Mandatory minimum requirements checklist for Category 6, as defined by Yachting Australia, per the AYF Special Regulations 2013 - 2016

<u>Reg No.</u>	<u>Subject</u>	<u>Category 6</u>
2.03.1	Equipment of suitable type & capacity & functions	
2.03.2	Ballast and heavy equipment secured	
3.01.1	Strength of build ballast and rig	
3.01.3	Stability and buoyancy	
3.02	Watertight integrity of hull	
3.02.3	Keel lockdown while racing	
3.04	Stability - monohulls	
3.06(b)	2 exits	
3.07	Forward Hatch opens outwards & above water	
3.08	Cockpit drainage	
3.12.6	Lifelines	
3.17	Galley Stove (if gas to AG601), Warning Notice and secured against capsize	
3.20.1&2	Manual Bilge Pumps 25mm (if fitted)	
3.20.9	Two buckets with lanyards	
3.24	Outboard engine carrying requirements	
3.25	Marine radio requirements	
3.28.1	Identification on hull	
4.01	Sail Numbers	
4.04	Fire Extinguishers, Serviced	
4.05	Anchor, 5m chain, 45m warp, appropriate size	
4.06	Flashlights, 1	
4.07	First Aid Kit in w/proof container with contents list	
4.10.3	AYF "Blue Book"	
4.15.3	Sharp knife at each cockpit	
4.16	Boat's name on all loose equipment	
4.17	Retro Tape on personal flotation devices etc. (State Law)	
4.22	Flares: 2 red, 2 orange	
4.26	Method of retrieving crew from the water	
4.27	Distress Sheet	
5.01	Personal flotation devices - 1 per crewperson (Note requirement for whistle)	
6.01	Routine training on board	

Attention of all competitors is drawn to the complete list of safety equipment which is "required" and 'recommended' for category 6 racing as shown in Racing Rules of Sailing 2013 – 2016 - AYF Special Regulations, Part 1, for Racing Boats, Sections 1 - 5. The checklist above includes only those items, which are listed as minimum requirements under Category 6, and does not list additional recommended safety equipment shown in the above publication. Further definitions and descriptions of safety equipment are provided in the 2013-2016 AYF Special regulations, Part 1 for Racing Boats