

**Steamboat Cup Race Geelong**  
**Saturday 6th. April, 2024**  
**Geelong Trailable Yacht Club (GTYC)**

**SUPPLEMENTARY SAILING INSTRUCTIONS**

**1. RULES**

1.1. The person in charge of each boat entered must attend the pre-race safety briefing. It is recommended that all crew attend.

1.2. Marine regulations require that boats shall avoid commercial shipping.

Boats which find themselves in danger of interfering with commercial shipping may use their engine to avoid interference, provided that it is used only as necessary to avoid commercial shipping and no advantage is gained through its use.

1.3. The Port of Geelong is a security regulated port as set out in the Maritime Transport Security Act 2003 and its associated regulations.

There are Restricted No Entry Zones in Corio Bay. Penalties including fines apply to unauthorised entry. It is the responsibility of the person in charge of each boat to comply with Port Security Regulations.

The penalty for a boat protested and found to have entered a No Entry Zone whilst racing, shall be disqualification.

**2. SCHEDULE OF RACES**

2.1. Race Schedule:

Division	Class Flag	Warning Signal
1 All CBH - single handed	E	1000
2 All CBH - Two handed	F	1030

**3. RACE OFFICE AND SIGNALS MADE ASHORE**

3.1. The Race HQ will be located at the **GTYC Clubhouse, St Helens.**

3.2. Signals made ashore will be posted on the Official Noticeboard.

**4. THE COURSES AND MARKS**

4.1. Appendix A shows the course, the order in which marks are to be passed and describes the marks and the side on which each mark is to be left.

**5. THE START**

5.1. The start line shall be approx. 200 m east of GTYC clubhouse.

**6. THE FINISH**

6.1. The finish line shall be between a pink or orange buoy, to be kept to starboard, laid approx. 200 metres east of GTYC Clubhouse, and either GTYC vessel "Even Keel" or GTYC clubhouse.

**7. TIME LIMIT**

7.1. (a) The time limit for boats to sail the course and finish is 1800.  
(b) Any boat still racing when the time limit expires will be scored points equal to the number of boats finishing within the time limit plus 2 points. Such boats will be scored Time Limit Expired (TLE). This changes RRS 35, A4.2 and A5.

**8. SAFETY REGULATIONS**

8.1. Prior to a boat's preparatory signal, it shall sign-on **at Race HQ**

8.2. Boats shall sign off **at Race HQ** after finishing.

8.3. Boats retiring are required to notify the race committee on VHF **77** as soon as practicable.

## 9. RADIO COMMUNICATION

- 9.1. Boats shall maintain a listening watch on the designated race management channel VHF **77** whilst on the water.  
VHF transceivers may be hand held or permanently installed.
- 9.2. The call sign of the race committee vessel is “**Even Keel**”

## 10. DISCLAIMER OF LIABILITY

- 10.1. Competitors participate in the regatta entirely at their own risk. See RRS 4, Decision to Race. The organising authority will not accept any liability for material damage or personal injury or death sustained in conjunction with or prior to, during, or after the regatta.

## FURTHER INFORMATION

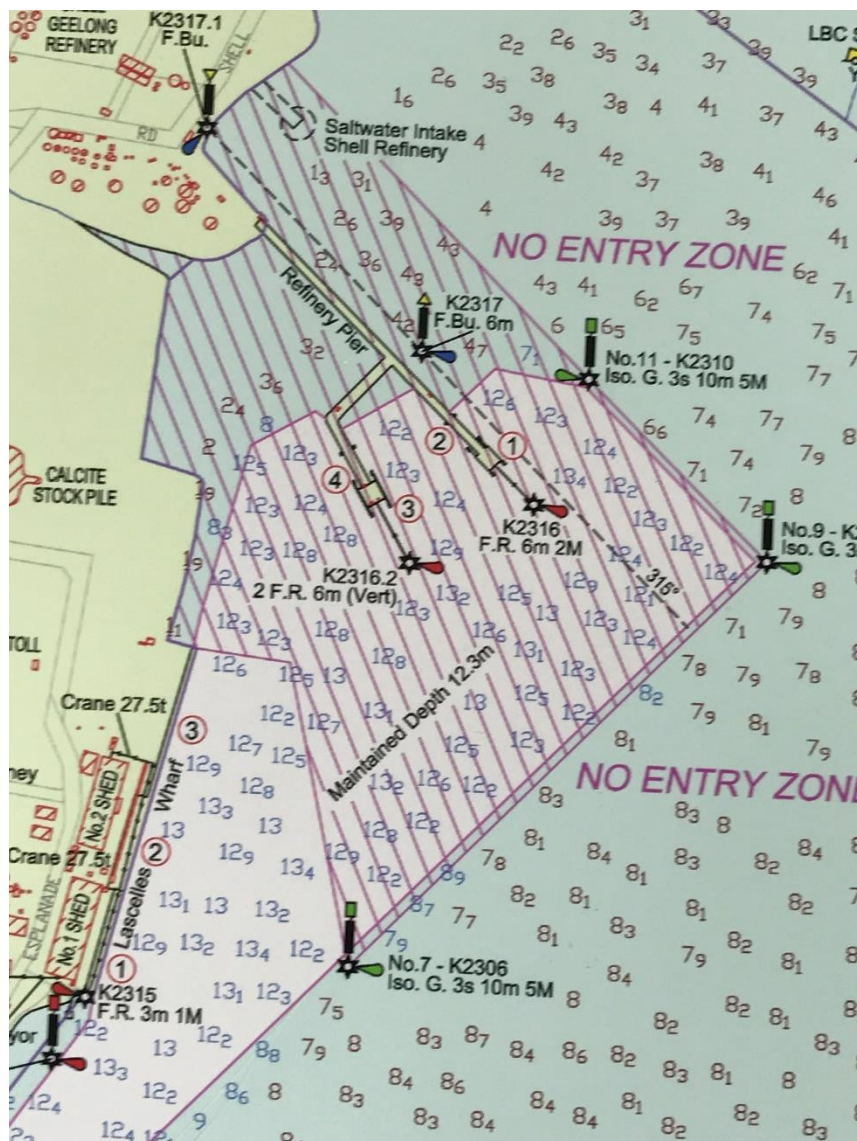
Additional Contacts:

Race OOD 0402 268 023

**GTYC Secretary 0411 142 917**

Coast Guard Geelong 03 5278 8440

Refinery Pier No Entry Zone:

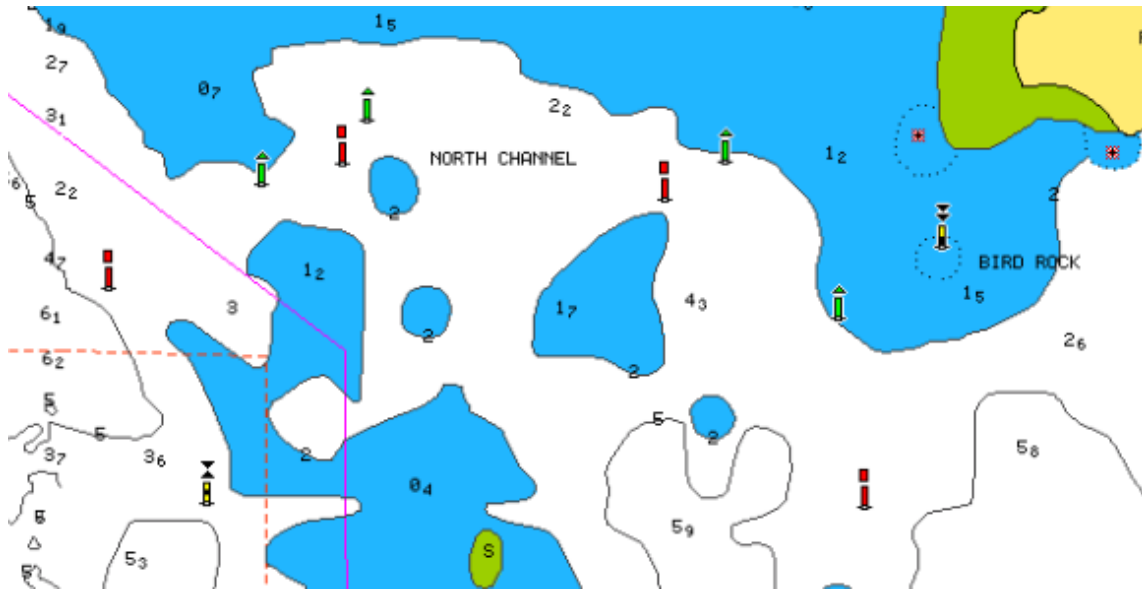


Source: Victorian Regional Channel Authority, May 2017



## Location of North Channel Marks

Note: The Channel Markers for the North Channel are not numbered. There are 4 Green and 4 Red Channel Markers.



\* Diagram NOT TO SCALE - Do not use for navigation

Approximate Channel Marker Locations are listed in the table below from East to West

Red Channel Markers		Green Channel Markers	
Latitude	Longitude	Latitude	Longitude
		38°05.81' S	144°26.15' E
38°05.63' S	144°25.82' E	38°05.58' S	144°25.93' E
38°05.57' S	144°25.20' E	38°05.51' S	144°25.25' E
38°05.75' S	144°24.75' E	38°05.61' S	144°25.05' E