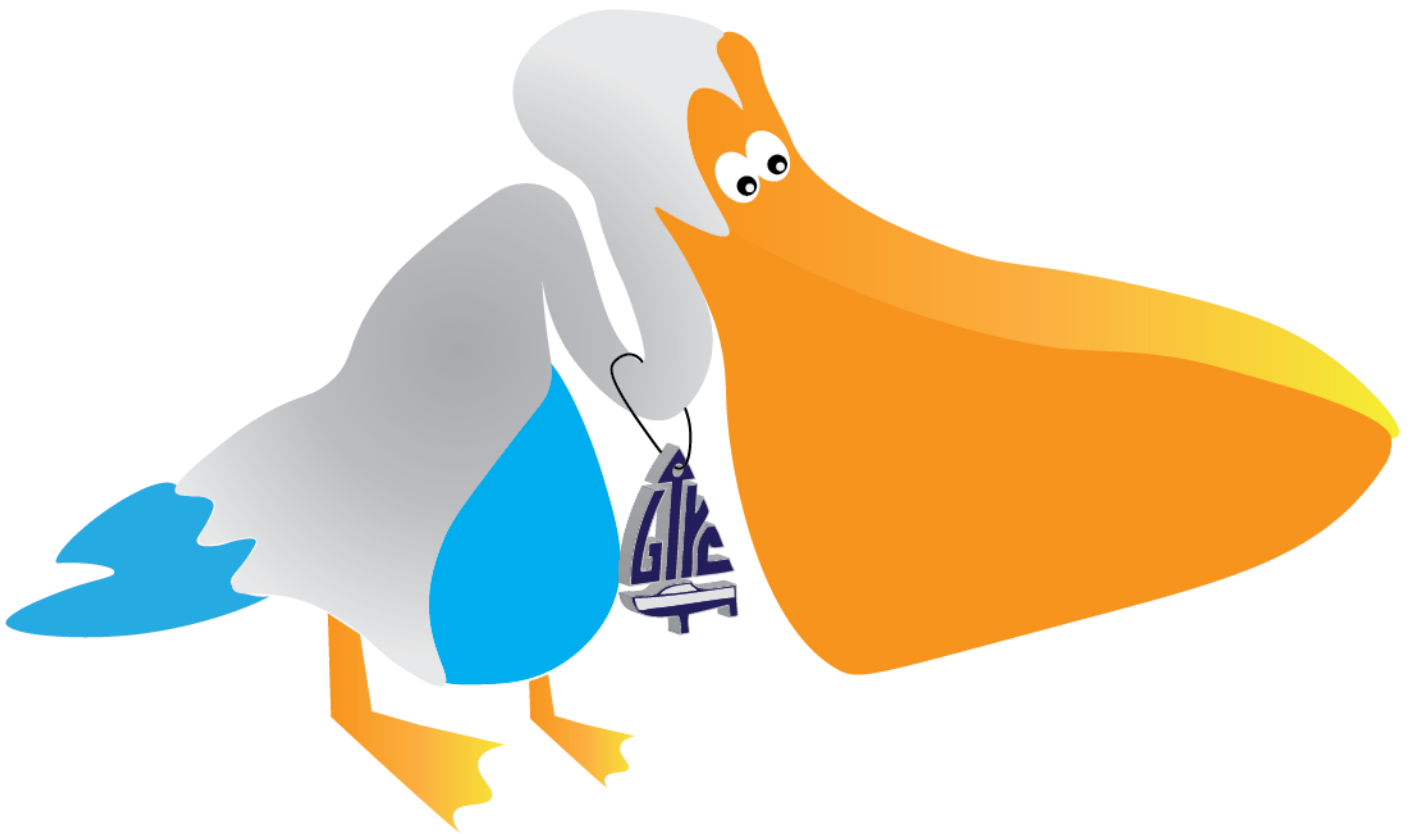


# Pelican Race Geelong

Geelong Trailable Yacht Club

Saturday 11<sup>th</sup> November 2023



## Notice of Race

**Date of Issue: 18 October 2023**

**Pelican Race Geelong**  
**Saturday 11<sup>th</sup> November 2023**  
**Geelong Trailable Yacht Club (GTYC)**

**NOTICE OF RACE**

**1. RULES**

- 1.1.** The regatta will be governed by the rules as defined in *The Racing Rules of Sailing* and the Australian Sailing (AS) Special Regulations Category 5 PLUS VHF transceiver.

Boats shall maintain a listening watch on the designated race management channel VHF 77 whilst on the water.

VHF transceivers may be hand held or permanently installed.

- 1.2.** The person in charge of each boat entered must attend the pre-race safety briefing. It is recommended that all crew attend.

- 1.3.** The sailing instructions will consist of the instructions in RRS Appendix S, Standard Sailing Instructions, and supplementary sailing instructions that will be on the official notice board located at the GTYC Clubhouse.

**2. ADVERTISING**

- 2.1.** Boats may be required to display advertising chosen and supplied by the organising authority.

**3. ELIGIBILITY AND ENTRY**

- 3.1.** Entry is open to all boats complying with the Australian Trailable Yacht and Sports Boat Rule.

- 3.2.** Enter by submitting the completed Entry Form and Payment **prior to** 2000 on Friday 10<sup>th</sup> November 2023. Late entry fee applies to entries received after 2000 on Friday 10<sup>th</sup>. November, 2023.

- 3.3.** Late entries will be accepted up to 0900, on the day of the race.

**4. FEES**

- 4.1.** The required fee is \$30 per boat.

- 4.2.** An additional \$10 applies to entries received after 2000, Friday 10<sup>th</sup>. November.

**5. SCHEDULE**

- 5.1.** Prior to racing, boats are required to register and sign-on at the race office located at the GTYC Clubhouse from 0800 on the day of the race.

- 5.2.** Pre-Race Safety Briefing 0900, on the day of the race.

- 5.3.** Race Schedule:

Division	Class Flag	Warning Signal
4 Cruising Non-Spinnaker - All	E	1025
3 CBH below 0.700	E	1025
2 CBH 0.700 – 0.769	F	1040
1 CBH 0.770 or above	G	1055

**6. VENUE AND COURSES**

- 6.1.** Appendix A shows the Race Area (inner and outer Corio Bay) and the courses to be sailed.

- 6.2.** The course lengths will be:

Divisions 1 and 2: approx. 21 NM

Divisions 3 and 4: approx. 18 NM

- 6.3.** Courses may be changed to suit weather conditions on the day. Check for any changes to Sailing Instructions.

**7. SCORING**

- 7.1.** Races will be scored on YV Class Based Handicap (CBH) published March 2019..

**8. PRIZES**

- 8.1.** Prizes will be given for 1<sup>st</sup>, 2<sup>nd</sup> and 3<sup>rd</sup> on CBH, for each division with three or more starters.

- 8.2.** Additional prizes may be given at the discretion of the organising authority.

## **9. DISCLAIMER OF LIABILITY**

- 9.1.** Competitors participate in the regatta entirely at their own risk. See RRS 4, Decision to Race. The organising authority will not accept any liability for material damage or personal injury or death sustained in conjunction with or prior to, during, or after the regatta.

## **10. INSURANCE**

- 10.1.** Each participating boat shall be insured with valid third-party liability insurance with a minimum cover of A\$10 Million per incident or the equivalent.

## **11. FURTHER INFORMATION**

- 11.1.** For further information please contact:
- 11.2.** Name: John Mole  
Phone: 0411 142 917  
Email: [secretary@gtyc.com.au](mailto:secretary@gtyc.com.au)  
Website: [www.gtyc.com.au](http://www.gtyc.com.au)

# **Additional Information**

### **St Helens Boat Ramp**

Turn east off the Melbourne-Geelong Road into Swinburne St, North Geelong;  
Excellent parking facilities; avoid trees while manoeuvring mast-up;  
Short term mooring available; please advise if you are intending to arrive Friday.  
Public BBQ facilities, public toilets and showers available.

### **Catering**

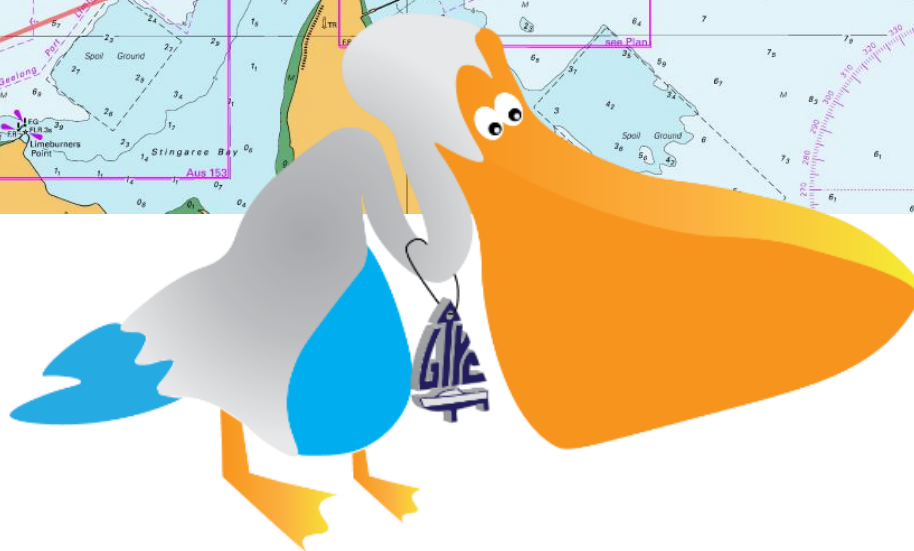
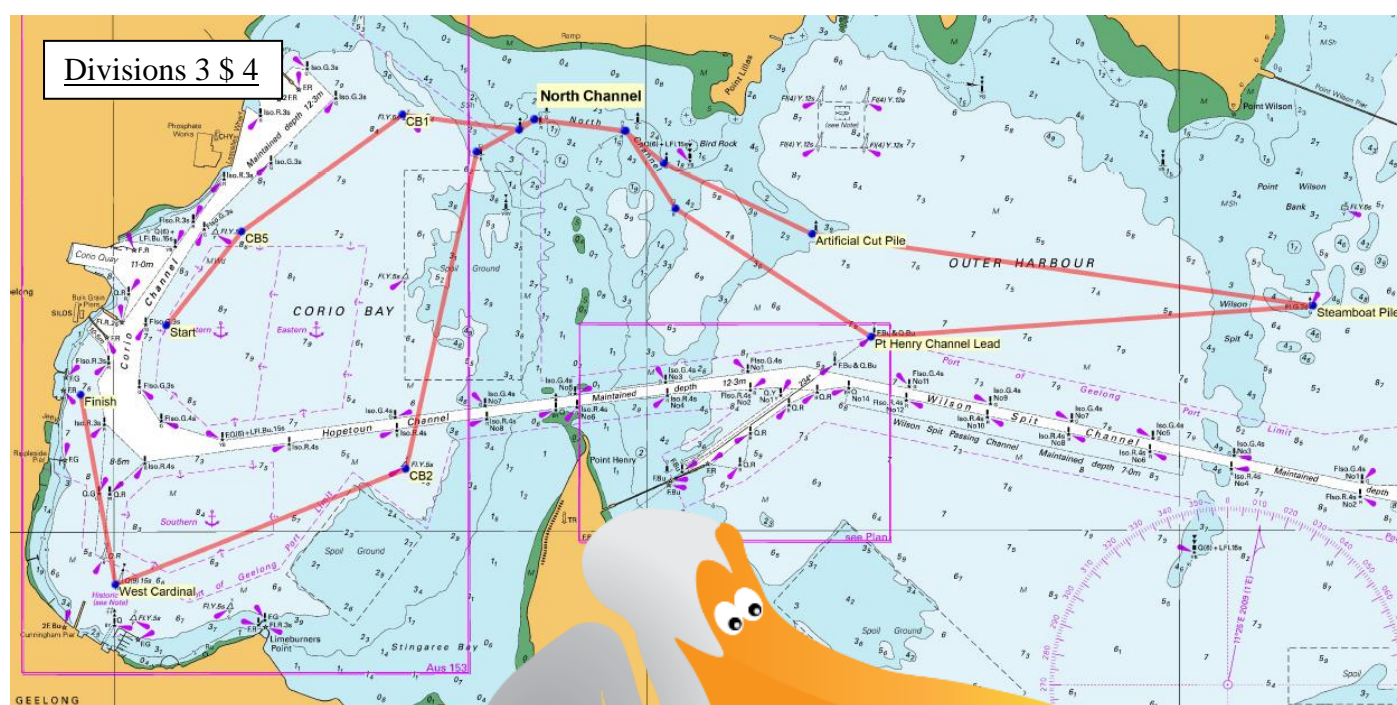
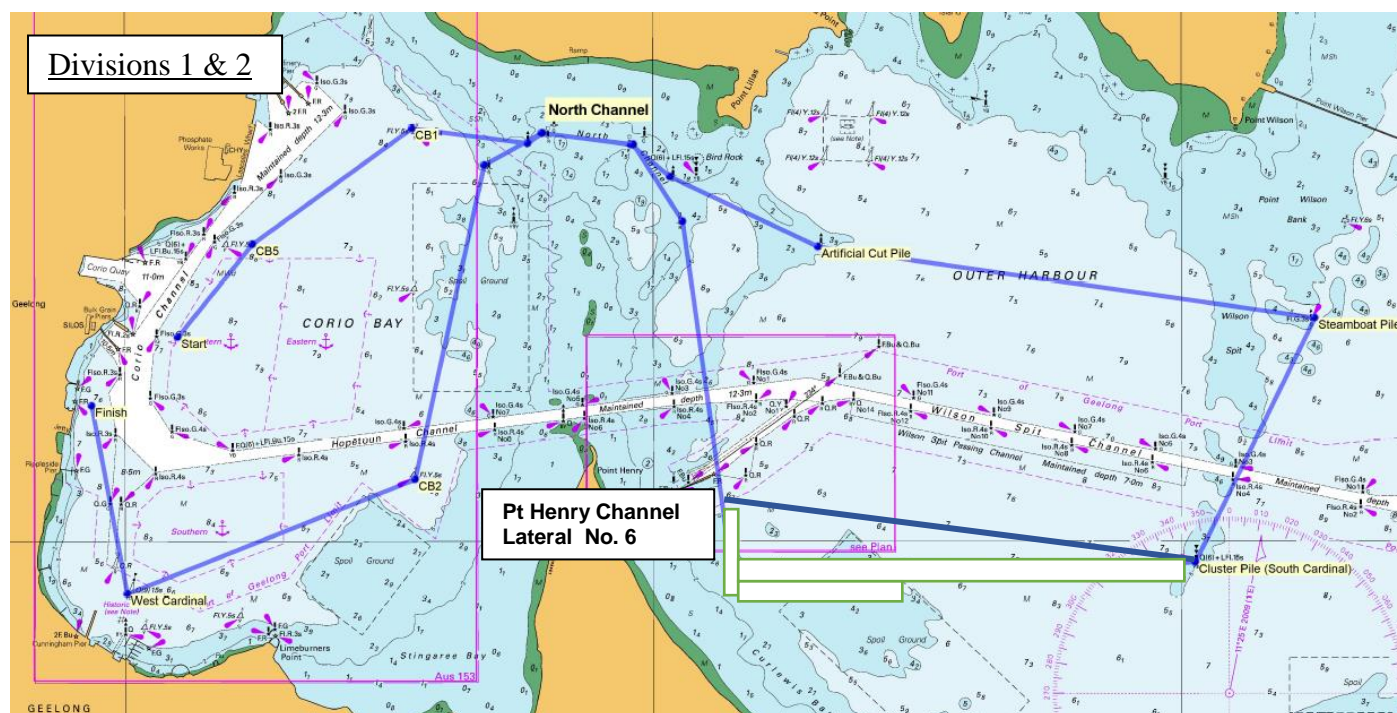
Cooked Breakfast will be available before the race for \$5 per person, pay on the day. (Bacon, Eggs, Toast & Jam, tea/coffee)

After the race, Sausage sizzle, (sausage, bread and sauces), tea/coffee will be available for \$5 per person (pay on the day)  
Cold drinks will be available for purchase.

Please feel free to stay on the jetties overnight. Advise the secretary for an evening BBQ at the GTYC Clubhouse.

## APPENDIX A – APPROXIMATE COURSE DIAGRAMS

Inner & Outer Corio Bay via North Channel. Refer to Supplementary Sailing Instructions for course detail.



## Entry Form

### 2023 GTYC Pelican Geelong Race

Boat Reg. No: \_\_\_\_\_ Yacht Name: \_\_\_\_\_

Colour: Hull: \_\_\_\_\_ Deck: \_\_\_\_\_ Mainsail N°: \_\_\_\_\_

CBH: \_\_\_\_\_ Class: \_\_\_\_\_ Drop Keel/Swing Keel (circle as applicable)

Owner/Skipper's name: \_\_\_\_\_ Division entered: \_\_\_\_\_

Address: \_\_\_\_\_ City: \_\_\_\_\_ Post code: \_\_\_\_\_

Ph: Home: ( ) \_\_\_\_\_ Business: ( ) \_\_\_\_\_ Emergency ( ) \_\_\_\_\_

On-board mobile phone N°: \_\_\_\_\_ Email address: \_\_\_\_\_

Name of Club of which you are a member: \_\_\_\_\_

Crew names and emergency phone Nos:

1. \_\_\_\_\_ Phone: \_\_\_\_\_

2. \_\_\_\_\_ Phone: \_\_\_\_\_

3. \_\_\_\_\_ Phone: \_\_\_\_\_

4. \_\_\_\_\_ Phone: \_\_\_\_\_

**Entry Fee:** (entry received prior to 2000 Friday 10<sup>th</sup> November, 2023) **\$ 30.00**

**OR Late Entry Fee:** (entry received after 2000 Friday 10<sup>th</sup> November, 2023) **\$ 40.00**

**Payment: Cheque payable to GTYC mailed to GTYC Q2G, PO Box 899, Geelong Vic. 3220. Or Direct Deposit with name and PELICAN to Geelong Trailable Yacht Club Inc; BSB 063512; A/c No. 0091 3771**

#### I hereby:

1. Declare that entered yacht conforms to the class rules requirements for the CBH claimed, or the yacht varies from class rules and or CBH as per the attached certification.
2. Declare that I will not hold GTYC Inc. or any associated party liable for material damage or personal injury or death sustained in conjunction with, prior to, during or after the race.
3. Agree to sail in fair competition under Class Rules, the Racing Rules of Sailing as amended by the Sailing Instructions.
4. Declare that all information provided is true and correct and that I will make my yacht available for inspection upon request by a member of the Race Committee.
5. Acknowledge and understand that Rule 4, "Decision to Race", places the sole responsibility on the boat for deciding whether or not to start, or to continue racing.
6. Declare that my yacht is covered by third party liability insurance of at least \$10M.

**Signed** \_\_\_\_\_ Skipper/Owner Dated \_\_\_\_/\_\_\_\_/ 2023

**Post to: The Secretary, Geelong Trailable Yacht Club Inc. P.O. Box 899, Geelong. 3220 or email to [secretary@gtyc.com.au](mailto:secretary@gtyc.com.au)**