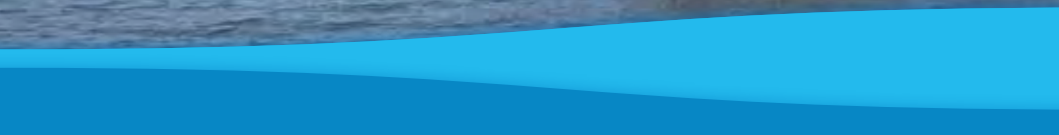
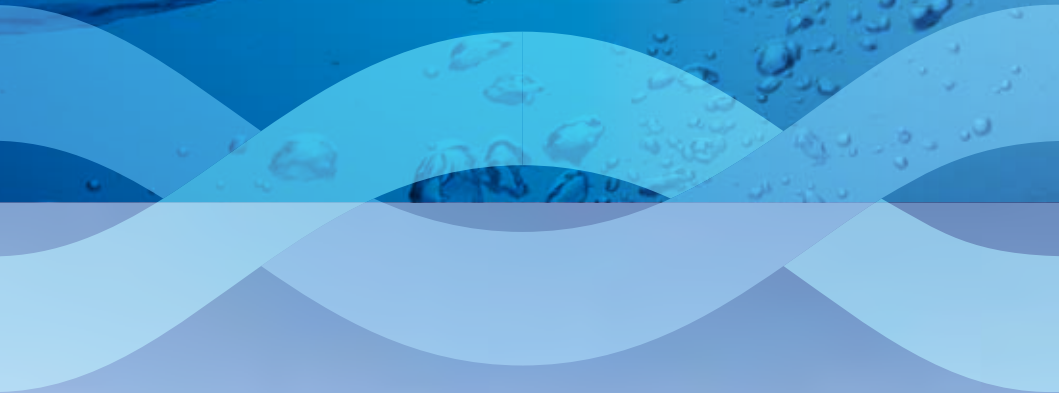


# Lake Eildon

## Recreation Guide



# Welcome to Lake Eildon

Lake Eildon is one of Victoria's most important water storages and holiday destinations.

The huge expanse of water is surrounded by national parks and is known as the Gateway to the Victorian High Country.

Lake Eildon is well served by local townships, with Howqua, Jamieson, Mansfield, Eildon and Bonnie Doon a stones throw from the water. Alexandra is just 28 kilometres away and Melbourne a comfortable two hour drive.



Like to know more about Lake Eildon?  
Visit us at [www.g-mwater.com.au](http://www.g-mwater.com.au)

*Did you know?*

Lake Eildon is 70 kilometres long and in places is up to 76 metres deep!

## G-MW & Dams

Lake Eildon is just one of G-MW's 16 water storages scattered across a region the size of Tasmania.

G-MW is not only responsible for dams - it also looks after boating and recreational activities on and around the water. G-MW is also a large land manager and the largest inland boating authority in Victoria!

As part of managing these responsibilities, G-MW develops a Land and On-Water Management Plan for each storage - including Lake Eildon. The Plans focus on what people value and enjoy about G-MW's water storages - from boat ramps to picnic tables, water sports to wildlife habitat.

To find out more about the Lake Eildon Land and On-Water Management Plan visit:  
[www.g-mwater.com.au/lakeeildon](http://www.g-mwater.com.au/lakeeildon)

## Dam Operations

Lake Eildon covers 13,832 hectares and when full holds 3,334,158 megalitres.

On average, 91% of water released from Lake Eildon is diverted for irrigation purposes and supplies around 60% of water used in the Goulburn-Murray Irrigation District (GMID).

Approximately 96% of the water diverted from the GMID is delivered to water entitlement holders for irrigation or environmental purposes. The remaining 4% is supplied to urban water authorities for domestic water supply.

Lake Eildon has been designed to store enough water to supply customers through at least two drought seasons.

Daily storage levels and flows are available by calling (03) 5774 3928.

## Fishing



Lake Eildon is one of Australia's most popular freshwater fishing destinations, home to Brown Trout, Rainbow Trout, Redfin, Perch and Murray Cod.

The Eildon Pondage is a favourite spot for easy fishing, with a purpose-built pier and wheelchair access.

The nearby Snobs Creek Fish Hatchery keeps the lake regularly stocked with Trout - so there is always plenty to catch.

For the latest information on fishing at Lake Eildon contact DEPI. Don't forget your licence!

G-MW is Australia's largest rural water corporation managing around 70% of Victoria's stored water resources.

## Boating



With over 13,000 hectares of water to play on, it's no surprise that Lake Eildon is a very popular destination for watersports.

Boats can be launched from a number of boat ramps around the lake. See Boating Map overleaf.

Lake Eildon is the only reservoir in Victoria where houseboats and cabin cruisers with sleeping accommodation are permitted and has both public and private harbours.

Construction of the original storage, known as Sugarloaf Reservoir, took place between 1915 and 1929. It was modified several times before finally being completed in 1955, when it was renamed Lake Eildon.

## Relax & Unwind...

There's so much to do at Lake Eildon! From houseboating to horseriding, fishing to kayaking, it's the perfect spot for the whole family.

### Accommodation:

Visitors to Lake Eildon can choose from a wide range of accommodation - from luxury hotels to holiday houses, caravan parks and camp sites. Or try something different and stay on the water in a houseboat!

For more information call the Visitor Information Centre on 1800 652 298 or visit: [www.lakeeildon.com](http://www.lakeeildon.com)

Did you know?

Lake Eildon's shoreline is 515 kilometres long with more than 40 boat ramps!



# Who should I contact about...

## *Emergencies:*

Police, Fire, Ambulance  
000

## *Weather reports:*

Bureau of Meteorology  
[www.bom.gov.au](http://www.bom.gov.au)

## *Fishing information:*

Department of  
Environment and Primary  
Industries 136 186

Please refer to the  
Victorian Recreational  
Fishing Guide available at  
[www.depi.vic.gov.au/  
fisheries](http://www.depi.vic.gov.au/fisheries)

## *Boating information:*

Transport Safety Victoria  
1800 223 022

Please refer to the  
Victorian Recreational  
Boating Safety Handbook  
available at [www.  
transportsafety.vic.gov.au](http://www.transportsafety.vic.gov.au)



## *Environmental information:*

EPA Victoria  
1300 372 842  
[www.epa.vic.gov.au](http://www.epa.vic.gov.au)

Parks Victoria  
131 963  
[www.parks.vic.gov.au](http://www.parks.vic.gov.au)

*G-MW storages are open and easily accessible to the general public. They provide wonderful recreation opportunities, however their primary purpose is for storage and delivery of irrigation water to G-MW customers. Water levels vary over the irrigation season, rising with rainfall and falling as water is released for delivery.*



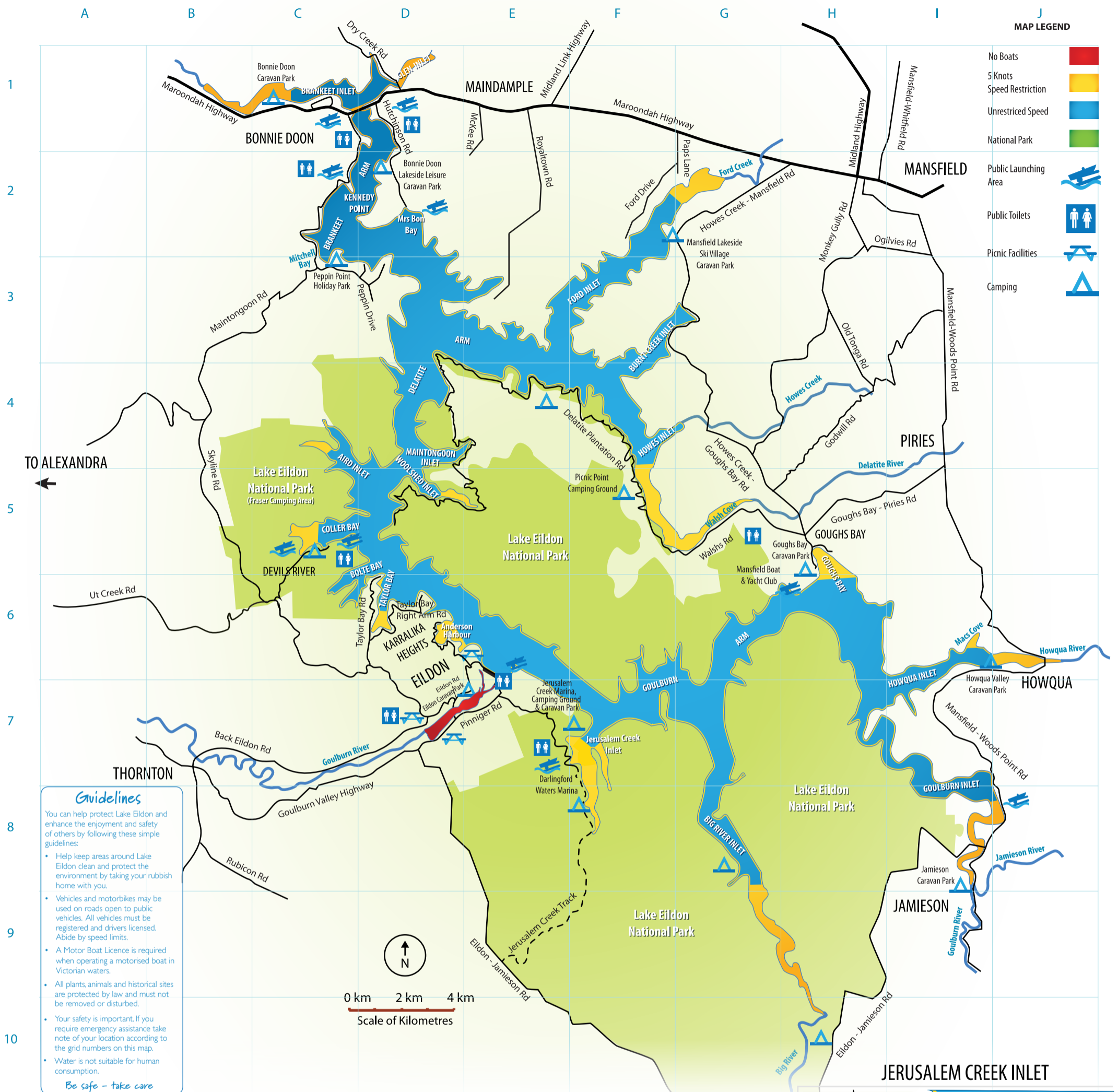
Goulburn-Murray Water  
PO Box 165  
Tatura Vic 3616

Tel 1800 013 357  
[www.g-mwater.com.au](http://www.g-mwater.com.au)

Copyright GMW. All rights reserved. Prepared June 2013



# Lake Eildon Boating & Facilities Map

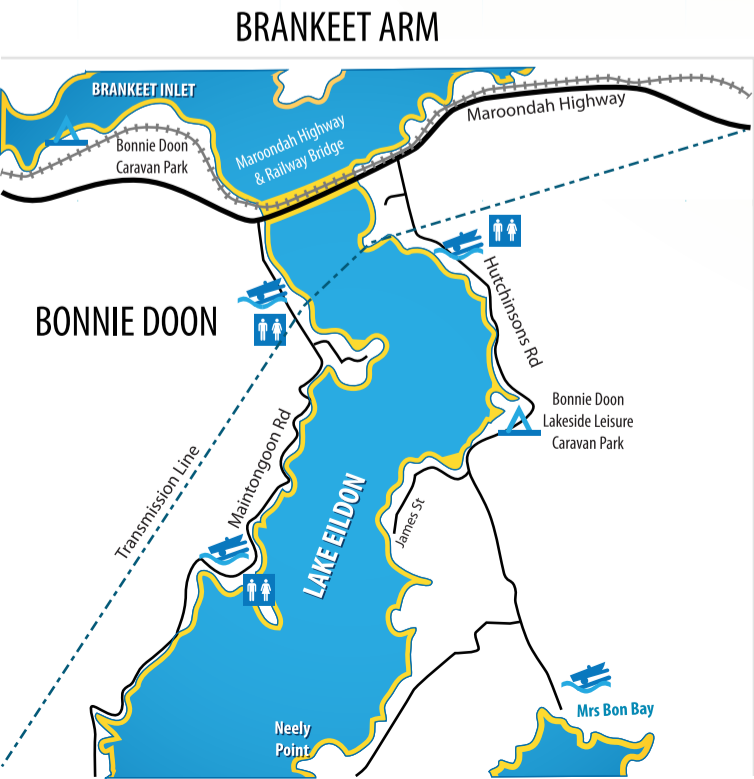


MAP LEGEND

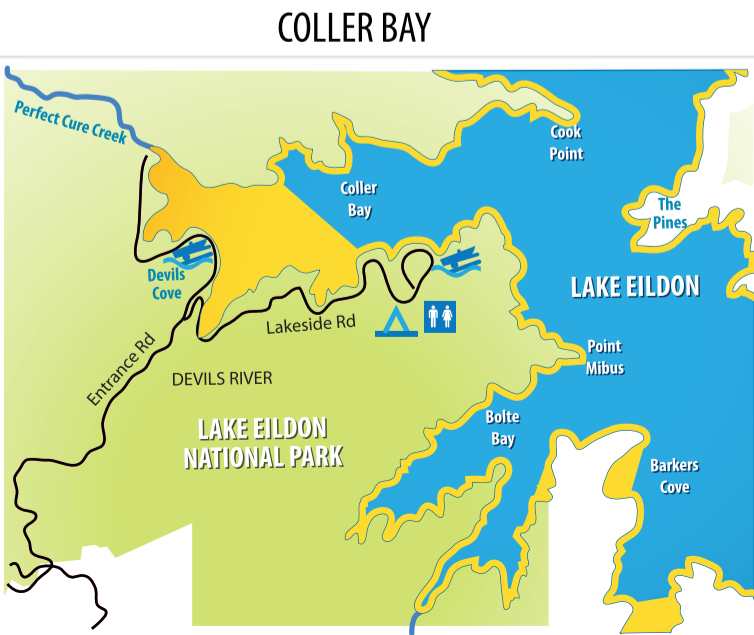
- No Boats █
- 5 Knots Speed Restriction █
- Unrestricted Speed █
- National Park █
- Public Launching Area
- Public Toilets
- Picnic Facilities
- Camping

## Guidelines

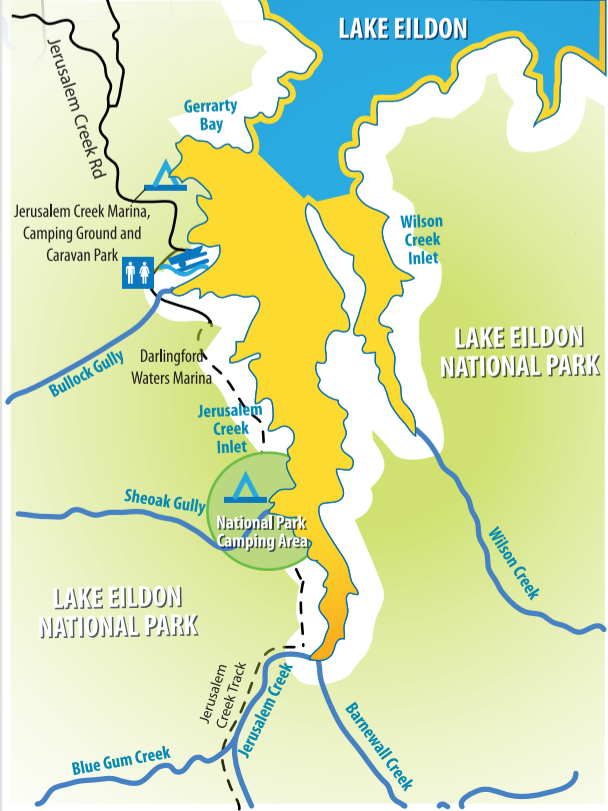
- You can help protect Lake Eildon and enhance the enjoyment and safety of others by following these simple guidelines:
- Help keep areas around Lake Eildon clean and protect the environment by taking your rubbish home with you.
  - Vehicles and motorbikes may be used on roads open to public vehicles. All vehicles must be registered and drivers licensed. Abide by speed limits.
  - A Motor Boat Licence is required when operating a motorised boat in Victorian waters.
  - All plants, animals and historical sites are protected by law and must not be removed or disturbed.
  - Your safety is important. If you require emergency assistance take note of your location according to the grid numbers on this map.
  - Water is not suitable for human consumption.
- Be safe - take care*



BRANKEET ARM



COLLER BAY



JERUSALEM CREEK INLET