

Curlewis Bank Race Geelong
Saturday 4th. February 2023
Geelong Trailable Yacht Club (GTYC)

SUPPLEMENTARY SAILING INSTRUCTIONS

1. RULES

- 1.1.** The person in charge of each boat entered must Sign On and must attend the pre-race safety briefing. It is recommended that all crew attend the pre-race safety briefing.
- 1.2.** Marine regulations require that boats shall avoid commercial shipping.
- Boats which find themselves in danger of interfering with commercial shipping may use their engine to avoid interference, provided that it is used only as necessary to avoid commercial shipping and no advantage is gained through its use.
- 1.3.** The Port of Geelong is a security regulated port as set out in the Maritime Transport Security Act 2003 and its associated regulations.
- There are Restricted No Entry Zones in Corio Bay. Penalties including fines apply to unauthorised entry. It is the responsibility of the person in charge of each boat to comply with Port Security Regulations. The penalty for a boat protested and found to have entered a No Entry Zone whilst racing, shall be disqualification.

2. SCHEDULE OF RACES

2.1. Race Schedule:

Division		ClassFlag	Warning Signal	Start Signal
4	Cruising Non Spinnaker-All	E	1025	1030
3	CBH below 0.700	E	1025	1030
2	CBH 0.700 – 0.769	F	1040	1045
1	CBH 0.770 or above	G	1055	1100

Race Committee may change the composition of divisions and starting times may be delayed, dependent on entries on the day. Results will be decided on CBH.

- 3.** A briefing will be held to confirm Divisions and Courses, report shipping movements and wind forecasts.

4. RACE OFFICE AND SIGNALS MADE ASHORE

- 4.1.** The race office will be located at the GTYC Club House.
- 4.2.** Signals made ashore will be posted on the Official Noticeboard.

5. THE COURSES AND MARKS

- 5.1.** Appendix A shows the courses, the order in which marks are to be passed and describes the marks and the side on which each mark is to be left.

6. THE START

- 6.1.** The start line shall be approx. 250 metres east of GTYC Clubhouse.

7. THE FINISH

- 7.1.** The finish line shall be between a pink or orange buoy, laid approx. 200 metres east of St Helens Boat Ramp and either GTYC vessel “Even Keel” or GTYC Clubhouse.

8. TIME LIMIT

- 8.1.** (a) The time limit for boats to sail the course and finish is 1800.
(b) Any boat still racing when the time limit expires will be scored points equal to the number of boats finishing within the time limit plus 2 points. Such boats will be scored Time Limit Expired (TLE). This changes RRS 35, A4.2 and A5.

9. SAFETY REGULATIONS

- 9.1.** Prior to 0925, every competing boat shall sign-on at the Race Office and verify that the name of the boat and the people on board are correctly marked on the entry form
- 9.2.** Boats shall sign off at the Race Office as soon as possible after finishing.
- 9.3.** Boats retiring are required to notify the race committee as soon as practicable.

10. RADIO COMMUNICATION

- 10.1.** Boats shall maintain a listening watch on the designated race management channel VHF 77 whilst on the water.
VHF transceivers may be hand held or permanently installed.
- 10.2.** The call sign of the race GTYC vessel is “Even Keel”

11. DISCLAIMER OF LIABILITY

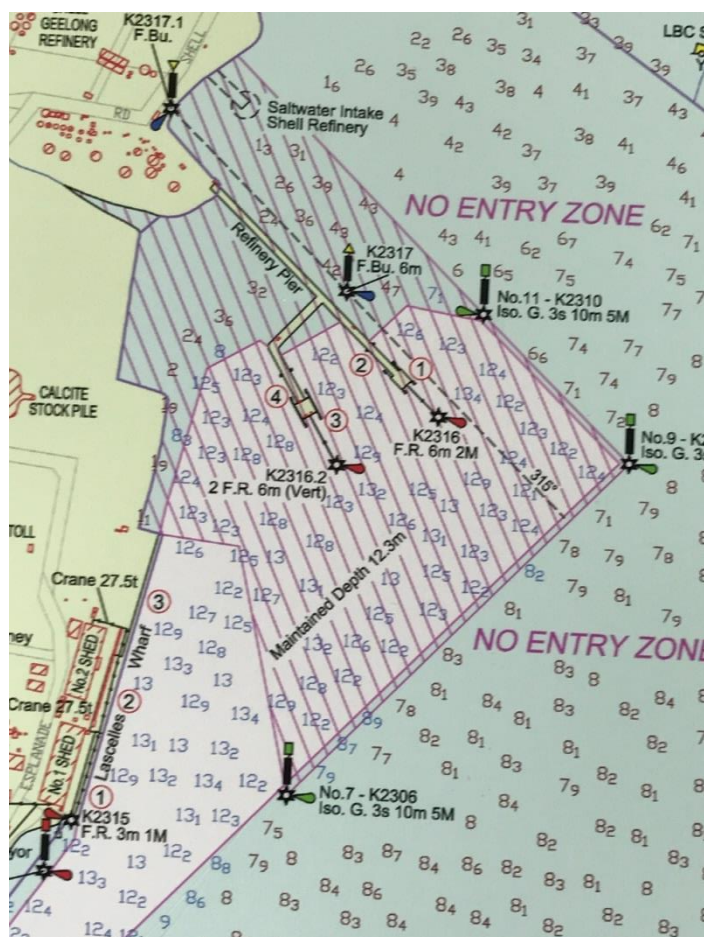
- 11.1.** Competitors participate in the race entirely at their own risk. See RRS 4, Decision to Race. The organising authority will not accept any liability for material damage or personal injury or death sustained in conjunction with or prior to, during or after the regatta.

FURTHER INFORMATION

Additional Contacts:

Officer of the Day Bob Balding; 0402 268 023; Even Keel VHF 77
John Mole (Secretary GTYC) 0411 142 917
Coast Guard Geelong 03 5278 8440

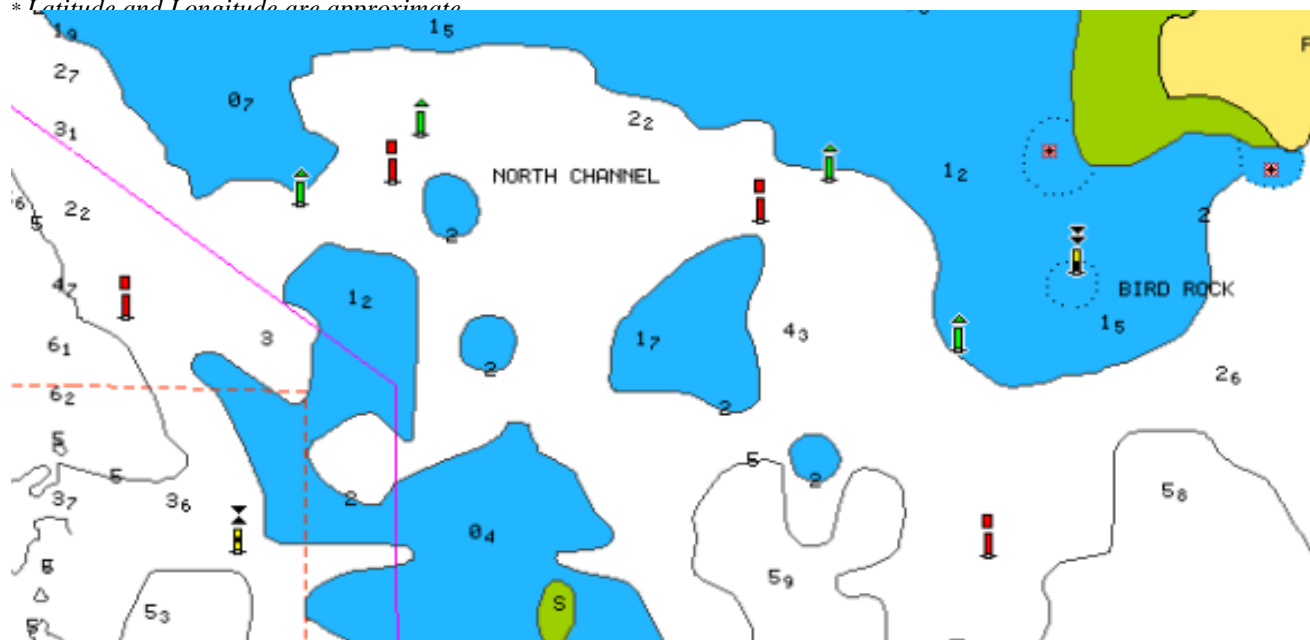
Refinery Pier No Entry Zone: (Source: Victorian Regional Channel Authority, May 2017)



North Channel: (Approximate Channel Marker Locations from East to West)

Red Channel Markers		Green Channel Markers	
		38°05.81' S	144°26.15' E
38°05.63' S	144°25.82' E	38°05.58' S	144°25.93' E
38°05.57' S	144°25.20' E	38°05.51' S	144°25.25' E
38°05.75' S	144°24.75' E	38°05.61' S	144°25.05' E

* Latitude and Longitude are approximate



APPENDIX A: COURSES AND MARKS (Course diagrams not to scale – do not use for navigation)

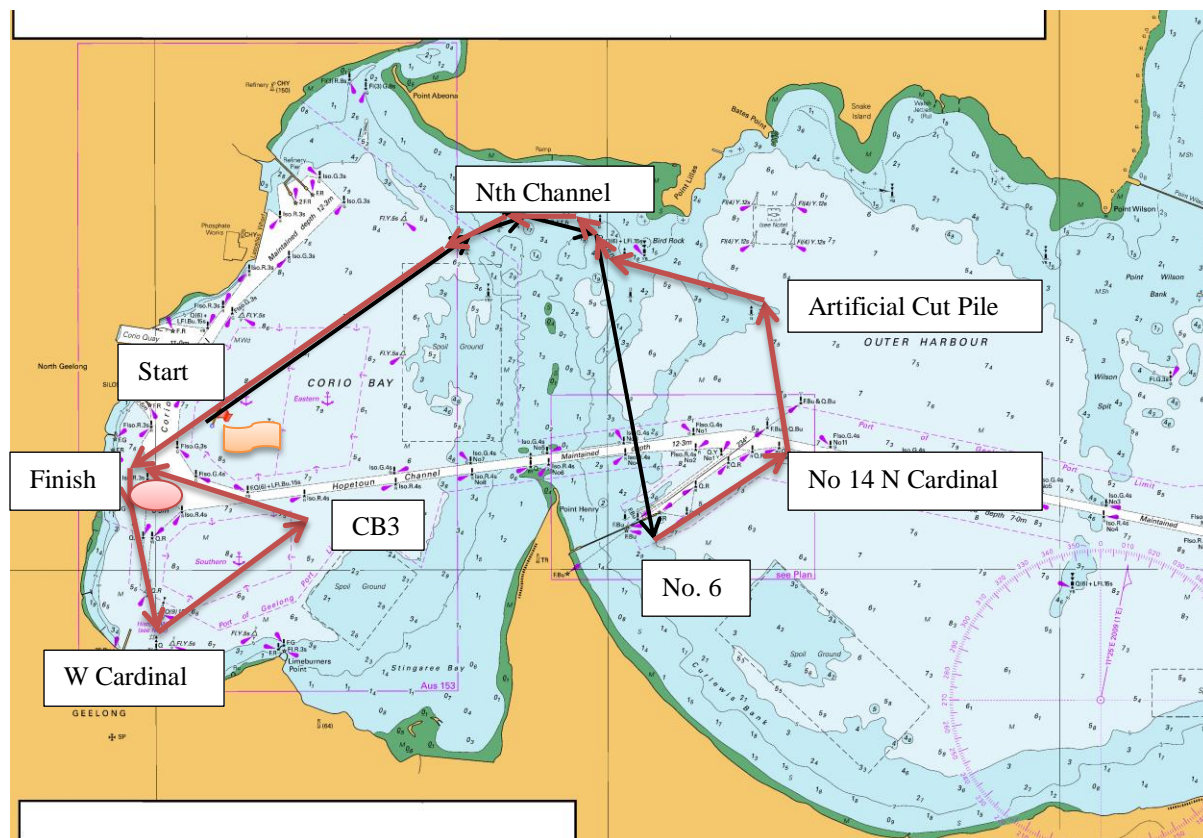
Course 1 designated by Numeral Pennant 1

Approx. Length 19NM

Division 1 and Division 2 (CBH 0.700 and above)

Mark	Description	Latitude	Longitude	Leave to
Start	Start Mark	Fluoro-pink Can		
1	North Channel three Red Markers			Starboard
2	North Channel four Green Markers			Port
3	Alcoa Channel No. 6	Pile	38°07.640' S 144°26.705' E	Port
4	Wilson Spit Channel No. 14	North Cardinal	38°07.152' S 144°27.518' E	Port
5	Artificial Cut Pile (Green)	Green Pile	38°06.222' S 144°27.270' E	Port
6	North Channel four Green Markers			Starboard
7	North Channel three Red Markers			Port
8	St Helens	Fluoro-pink can		Port
9	West Cardinal	West Cardinal	38°08.309' S 144°22.031' E	Port
10	CB3	Yellow Cone	38°07.607' S 144°23.568' E	Port
11	Finish Mark St Helens	Fluoro-pink can		Port

* Latitude and Longitude are approximate



Course 2 designated by Numeral Pennant 2

Approx. Length 15NM

Division 3 and Division 4 (CBH < 0.700 and Cruising)

Mark	Description	Latitude	Longitude	Leave Mark to
Start	Start Mark	Fluoro-pink Can		
1	North Channel three Red Markers			Starboard
2	North Channel four Green Markers			Port
3	Alcoa channel No. 6	Pile	38°07.640' S 144°26.705' E	Port
4	Wilson Spit Channel No. 14	North Cardinal	38°07.152' S 144°27.518' E	Port
5	Artificial Cut Pile (Green)	Green Pile	38°06.222' S 144°27.270' E	Port
6	North Channel four Green Markers			Starboard
7	North Channel three Red Markers			Port
8	Finish Mark	Fluoro-pink Can		Port

* Latitude and Longitude are approximate

