



## ***NOTICE of RACE***

### **Curlewis Bank Race**

**The Curlewis Bank is a shallow shore between the Curlewis Bank Pile east of Point Henry and the North Cardinal Pile off Clifton Springs.**

**Saturday 4th. February, 2023**

Issue Date: **18th. January, 2023**

**Curlewis Bank Race Geelong**  
**Saturday 4<sup>th</sup>.February 2023**  
**Geelong Trailable Yacht Club (GTYC)**

**NOTICE OF RACE**

**1. RULES**

- 1.1.** The regatta will be governed by the rules as defined in *The Racing Rules of Sailing* and the Australian Sailing (AS) Special Regulations Category 5 PLUS VHF transceiver.
- Boats shall maintain a listening watch on the designated race management channel VHF 77 whilst on the water.  
VHF transceivers may be hand held or permanently installed.
- 1.2.** The person in charge of each boat entered must attend the pre-race safety briefing. It is recommended that all crew attend.
- 1.3.** The sailing instructions will consist of the instructions in RRS Appendix S, Standard Sailing Instructions, and Supplementary Sailing Instructions that will be published before the event and will be on the official notice board located at the GTYC Rotunda.

**2. ADVERTISING**

- 2.1.** Boats may be required to display advertising chosen and supplied by the organising authority.

**3. ELIGIBILITY AND ENTRY**

- 3.1.** Entry is open to all boats complying with the Australian Trailable Yacht and Sports Boat Rule.
- 3.2.** Eligible boats may enter by completing and submitting the attached Entry Form and Payment on or before 4<sup>th</sup>. February, 2023.
- 3.3.** Late entries will be accepted up to 0925, on the day of the race.

**4. FEES**

- 4.1.** The entry fee is \$30 per boat.
- 4.2.** An additional \$10 fee applies to late entries.

**5. SCHEDULE**

- 5.1.** Prior to racing, boats are required to register from 0800 to 0925 at the race office located at the GTYC Club House on the day of the race.
- 5.2.** Pre-Race Safety Briefing 0925, on the day of the race.
- 5.3.** Race Schedule: Divisions and courses may be revised dependent on numbers entered.

Division		Class Flag	Warning Signal
4	Cruising Non-Spinnaker - All	E	1025
3	CBH below 0.700	E	1025
2	CBH 0.700 – 0.769	F	1040
1	CBH 0.770 or above	G	1055

**6. VENUE AND COURSES**

- 6.1.** Appendix A shows the Race Area (inner and outer Corio Bay) and the courses to be sailed.
- 6.2.** The course lengths will be:  
Divisions 1 and 2: approx. 17 NM  
Divisions 3 and 4: approx. 13 NM
- 6.3.** Courses may be changed to suit weather conditions on the day. Check for any changes to Sailing Instructions.

**7. SCORING**

- 7.1.** Races will be scored on Class Based Handicap (CBH).

**8. PRIZES**

- 8.1.** Prizes will be given for 1<sup>st</sup>, 2<sup>nd</sup> and 3<sup>rd</sup> on CBH, for each division with three or more starters.
- 8.2.** Additional prizes may be given at the discretion of the organising authority.

## 9. DISCLAIMER OF LIABILITY

- 9.1. Competitors participate in the regatta entirely at their own risk. See RRS 4, Decision to Race. The organising authority will not accept any liability for material damage or personal injury or death sustained in conjunction with or prior to, during, or after the regatta.

## 10. INSURANCE

- 10.1. Each participating boat shall be insured with valid third-party liability insurance with a minimum cover of AUD\$10 Million per incident or the equivalent.

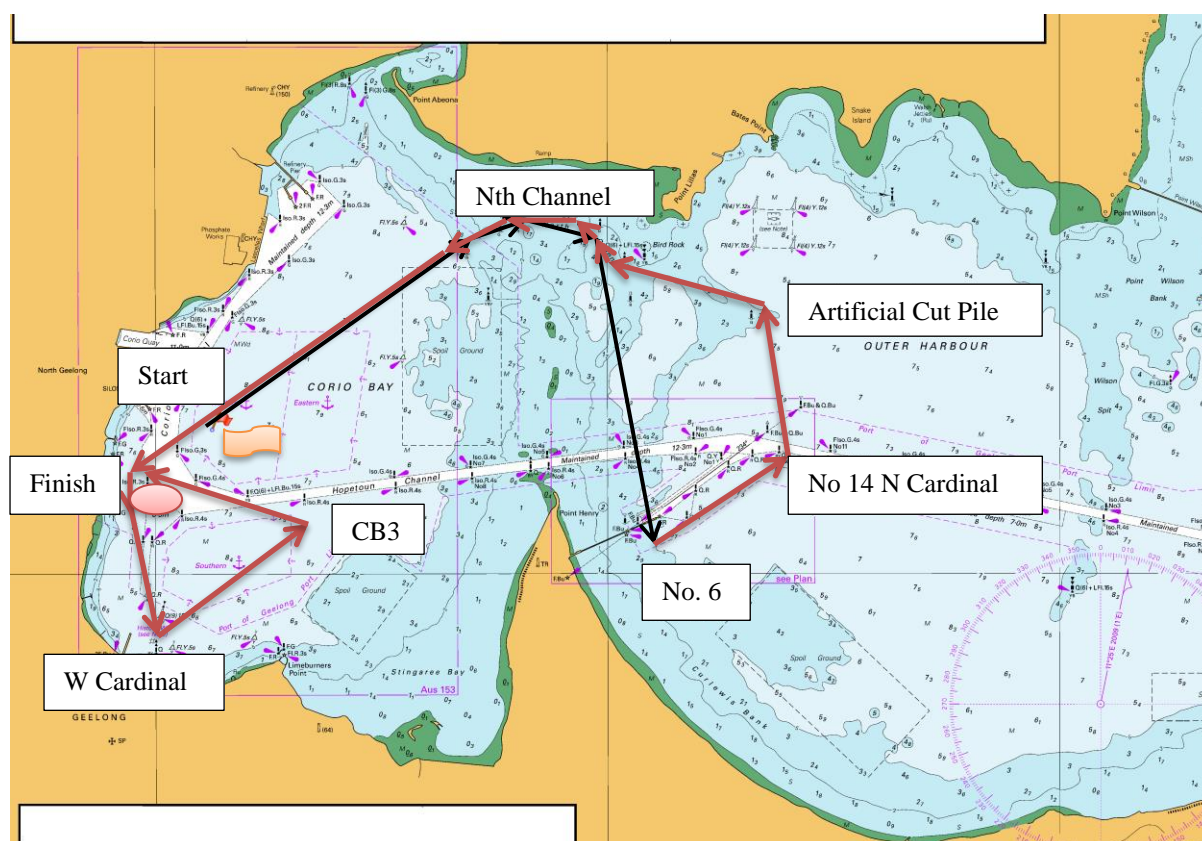
## 11. FURTHER INFORMATION

- 11.1. For further information please contact:

Name: John Mole  
Phone: 0411 142 917  
Email: [jamole64@bigpond.com](mailto:jamole64@bigpond.com)  
Website: [www.gtyc.com.au](http://www.gtyc.com.au)

## Appendix A

### Curlewis Bank Race Course Diagram



### Divisions 3 and 4:

Start-Nth Channel-No.6- No.14-Artificial Cut Pile-Nth Channel-Finish

### Divisions 1 and 2:

Start-Nth Channel-No.6- No.14-Artificial Cut Pile-Nth Channel-Finish mark-W.Cardinal-CB3-Finish

# Additional Information

## **St Helens Boat Ramp**

Turn east off the Melbourne-Geelong Road into Swinburne St, North Geelong;  
Ramp fee \$5-00 – pay at Coast Guard;  
Excellent parking facilities; avoid trees while manoeuvring mast-up;  
Short term mooring available;  
Public BBQ facilities, public toilets and showers available.

## **Catering**

After Race, Sausages, Hamburger with Salads, tea and coffee will be available for \$10 per person (pay on the day). Other drinks available at Clubhouse prices.

# Entry Form

## 2023 GTYC Curlewis Bank Geelong Race

Boat Reg. No: \_\_\_\_\_ Yacht Name: \_\_\_\_\_

Colour: Hull: \_\_\_\_\_ Deck: \_\_\_\_\_ Mainsail N<sup>o</sup>: \_\_\_\_\_

CBH: \_\_\_\_\_ Class: \_\_\_\_\_ Drop Keel/Swing Keel (circle as applicable)

Owner/Skipper's name: \_\_\_\_\_ Division entered: \_\_\_\_\_

Address: \_\_\_\_\_ City: \_\_\_\_\_ Post code: \_\_\_\_\_

Ph: Home: \_\_\_\_\_ Business: \_\_\_\_\_ Emergency: \_\_\_\_\_

On-board mobile phone N<sup>o</sup>: \_\_\_\_\_ Email address: \_\_\_\_\_

Name of Club of which you are a member: \_\_\_\_\_

Crew names and emergency phone Nos:

1. \_\_\_\_\_ Phone: \_\_\_\_\_
2. \_\_\_\_\_ Phone: \_\_\_\_\_
3. \_\_\_\_\_ Phone: \_\_\_\_\_
4. \_\_\_\_\_ Phone: \_\_\_\_\_

**Entry Fee:** Entry received on or before 3rd. February, 2023:..... **\$ 30.00**  
**OR** Entry received after 3rd. February, 2023:..... **\$ 40.00**

**Payment: Cheque payable to GTYC mailed to GTYC Curlewis, PO Box 899, Geelong Vic. 3220. Or Direct Deposit with name and Curlewis to Geelong Trailable Yacht Club Inc; BSB 063512; A/c No. 0091 3771**

**I hereby:**

1. Declare that entered yacht conforms to the class rules requirements for the CBH claimed, or the yacht varies from class rules and or CBH as per the attached certification.
2. Declare that I will not hold GTYC Inc. or any associated party liable for material damage or personal injury or death sustained in conjunction with, prior to, during or after the race.
3. Agree to sail in fair competition under Class Rules, the Racing Rules of Sailing as amended by the Sailing Instructions.
4. Declare that all information provided is true and correct and that I will make my yacht available for inspection upon request by a member of the Race Committee.
5. Acknowledge and understand that Rule 4, "Decision to Race", places the sole responsibility on the boat for deciding whether or not to start, or to continue racing.
6. Declare that my yacht is covered by third party liability insurance of at least \$10M.

**Signed** \_\_\_\_\_ Skipper/Owner Dated \_\_\_\_/\_\_\_\_/ 2023

**Post to: The Secretary, Geelong Trailable Yacht Club Inc. P.O. Box 899, Geelong. 3220 or email to [secretary@gtyc.com.au](mailto:secretary@gtyc.com.au)**