

Pelican Race Geelong
Saturday 13th November 2021
Geelong Trailable Yacht Club (GTYC)

SUPPLEMENTARY SAILING INSTRUCTIONS

1. RULES

1.1. The person in charge of each boat entered must attend the pre-race safety briefing. It is recommended that all crew attend.

1.2. Marine regulations require that boats shall avoid commercial shipping.

Boats which find themselves in danger of interfering with commercial shipping may use their engine to avoid interference, provided that it is used only as necessary to avoid commercial shipping and no advantage is gained through its use.

1.3. The Port of Geelong is a security regulated port as set out in the Maritime Transport Security Act 2003 and its associated regulations.

There are Restricted No Entry Zones in Corio Bay. Penalties including fines apply to unauthorised entry. It is the responsibility of the person in charge of each boat to comply with Port Security Regulations.

The penalty for a boat protested and found to have entered a No Entry Zone whilst racing, shall be disqualification.

2. SCHEDULE OF RACES

2.1. Race Schedule:

Division	Class Flag	Warning Signal
4 Cruising Non-Spinnaker - All	E	1025
3 CBH below 0.700	E	1025
2 CBH 0.700 – 0.769	F	1040
1 CBH 0.770 or above	G	1055

3. RACE OFFICE AND SIGNALS MADE ASHORE

3.1. The race office will be located at the GTYC Clubhouse.

3.2. Signals made ashore will be posted on the Official Noticeboard.

4. THE COURSES AND MARKS

4.1. Appendix A shows the courses, the order in which marks are to be passed and describes the marks and the side on which each mark is to be left.

4.2. **Divs. 1 and 2 please note the change to Course relative to NoR.**

5. THE START

5.1. The start line shall be approx. 200 metres east of No 3 Corio Channel mark.

6. THE FINISH

6.1. The finish line shall be approx. 200 metres east of St Helens Boat Ramp.

7. TIME LIMIT

7.1. (a) The time limit for boats to sail the course and finish is 1800.
(b) Any boat still racing when the time limit expires will be scored points equal to the number of boats finishing within the time limit plus 2 points. Such boats will be scored Time Limit Expired (TLE). This changes RRS 35, A4.2 and A5.

8. SAFETY REGULATIONS

8.1. Registration and Sign-on shall be at the Race Office prior to 09:00 on the day of the race.

8.2. Sign-off shall be at the Race Office as soon as possible after finishing.

8.3. Boats retiring are required to notify the race committee as soon as practicable.

9. RADIO COMMUNICATION

- 9.1. Boats shall maintain a listening watch on the designated race management channel VHF 77 whilst on the water.
VHF transceivers may be hand held or permanently installed.
- 9.2. The call sign of the race committee vessel is “Pelican Start”

10. DISCLAIMER OF LIABILITY

- 10.1. Competitors participate in the regatta entirely at their own risk. See RRS 4, Decision to Race. The organising authority will not accept any liability for material damage or personal injury or death sustained in conjunction with or prior to, during, or after the regatta.

10.2. COVID RULES

Do not attend if you have symptoms, are waiting for test results, or near a known COVID contact.

Masks to be worn whenever possible.

Hand sanitising in vicinity of clubhouse.

Maintain social distancing.

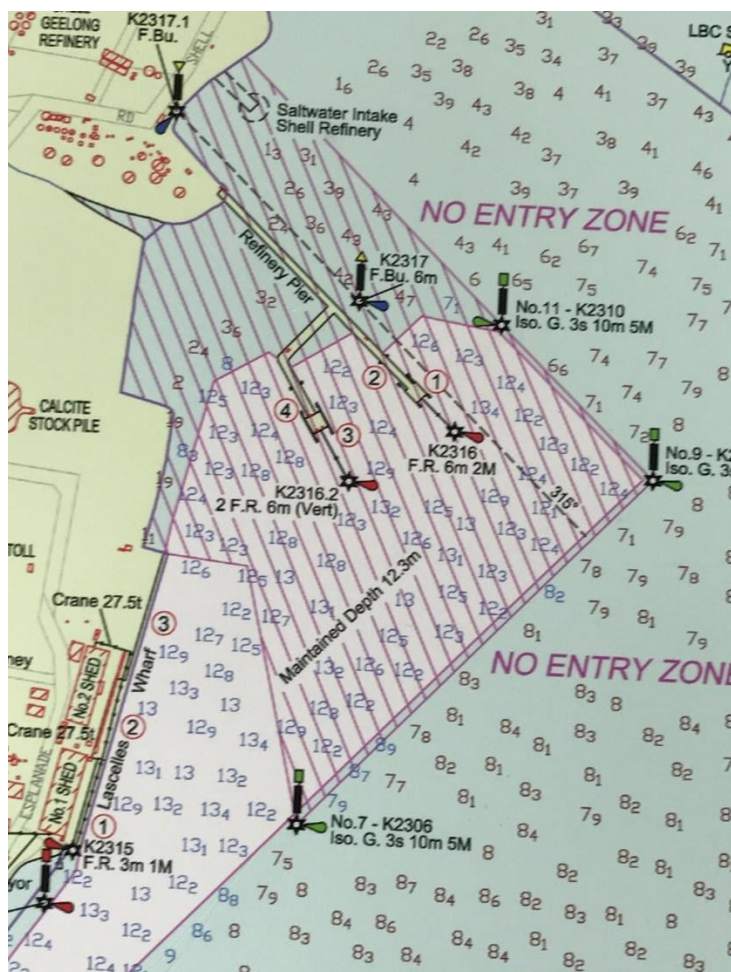
FURTHER INFORMATION

Additional Contacts:

Race Committee 0411 142 917

Coast Guard Geelong 03 5278 8440

Refinery Pier No Entry Zone:



Source: Victorian Regional Channel Authority, May 2017

Division 1 and Division 2

Mark		Description	Latitude*	Longitude*	Leave Mark to
Start	Start Mark	Laid Pink Can			
1	CB1	Yellow Cone	38°05.555' S	144°24.188' E	Starboard
2	North Channel ALL Green Channel Markers				Port
	North Channel ALL Red Channel Markers				Starboard
3	Artificial Cut Pile	Green Pile	38°06.222' S	144°27.270' E	Port
4	Steamboat Pile	Green Pile	38°06.680' S	144°30.981' E	Starboard
5	"Cluster" Mark	South Cardinal	38°08.135' S	144°30.115' E	Starboard
6	Pt Henry Channel Lateral No 6	Red Lateral No 6	38°07.607' S	144°26.628' E	Starboard
7	North Channel ALL Red Channel Markers				Port
	North Channel ALL Green Channel Markers				Starboard
8	CB2	Yellow Cone	38°07.616' S	144°24.184' E	Starboard
9	West Cardinal	West Cardinal	38°08.309' S	144°22.031' E	Starboard
10	Finish Mark	Laid Pink Can			

* Latitude and Longitude are approximate

Location of North Channel Marks

Note: The Channel Markers for the North Channel are not numbered. There are 4 Green and 4 Red Channel Markers.



* Diagram NOT TO SCALE - Do not use for navigation

Approximate Channel Marker Locations are listed in the table below from East to West

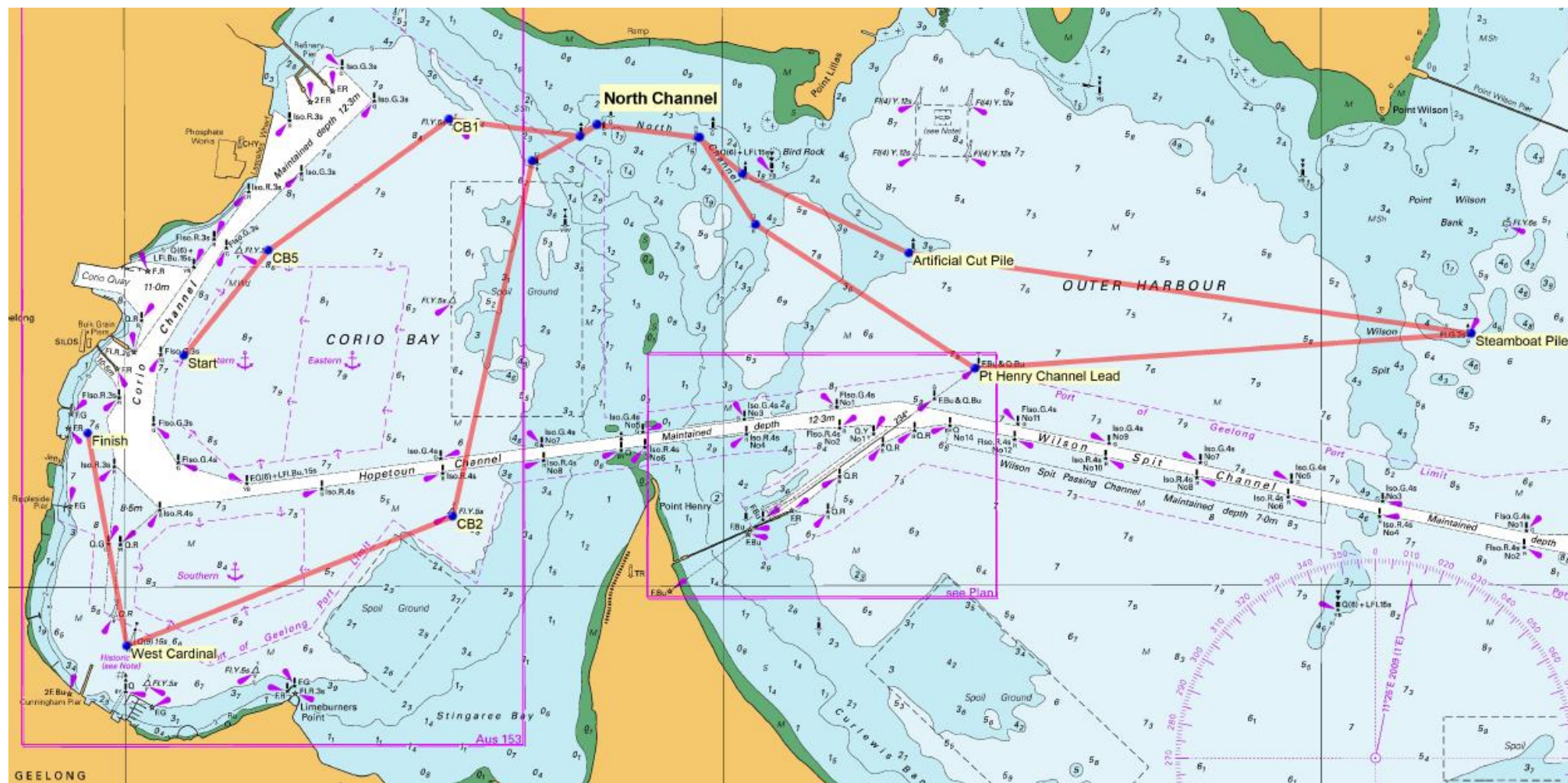
Red Channel Markers		Green Channel Markers	
Latitude*	Longitude*	Latitude*	Longitude*
38°06.09' S	144°26.23' E	38°05.81' S	144°26.15' E
38°05.63' S	144°25.82' E	38°05.58' S	144°25.93' E
38°05.57' S	144°25.20' E	38°05.51' S	144°25.25' E
38°05.75' S	144°24.75' E	38°05.61' S	144°25.05' E

* Latitude and Longitude are approximate

Course 2 designated by Numeral Pennant 2

Approx. Length 18NM

Division 3 and Division 4



* Course Diagram NOT TO SCALE - Do not use for navigation

Division 3 and Division 4

Mark		Description	Latitude*	Longitude*	Leave Mark to
Start	Start Mark	Laid Pink Can			
1	CB1	Yellow Cone	38°05.555' S	144°24.188' E	Starboard
2	North Channel ALL Green Channel Markers				Port
	North Channel ALL Red Channel Markers				Starboard
3	Artificial Cut Pile	Green Pile	38°06.222' S	144°27.270' E	Port
4	Steamboat Pile	Green Pile	38°06.680' S	144°30.981' E	Starboard
5	Pt Henry Channel Back Lead	Channel Lead Pile	38°06.680' S	144°27.709' E	Starboard
6	North Channel ALL Red Channel Markers				Port
	North Channel ALL Green Channel Markers				Starboard
7	CB2	Yellow Cone	38°07.616' S	144°24.184' E	Starboard
8	West Cardinal	West Cardinal	38°08.309' S	144°22.031' E	Starboard
9	Finish Mark	Laid Pink Can			

* Latitude and Longitude are approximate

Location of North Channel Marks

Note: The Channel Markers for the North Channel are not numbered. There are 4 Green and 4 Red Channel Markers.



* Diagram NOT TO SCALE - Do not use for navigation

Approximate Channel Marker Locations are listed in the table below from East to West

Red Channel Markers		Green Channel Markers	
Latitude*	Longitude*	Latitude*	Longitude*
38°06.09' S	144°26.23' E	38°05.81' S	144°26.15' E
38°05.63' S	144°25.82' E	38°05.58' S	144°25.93' E
38°05.57' S	144°25.20' E	38°05.51' S	144°25.25' E
38°05.75' S	144°24.75' E	38°05.61' S	144°25.05' E

* Latitude and Longitude are approximate