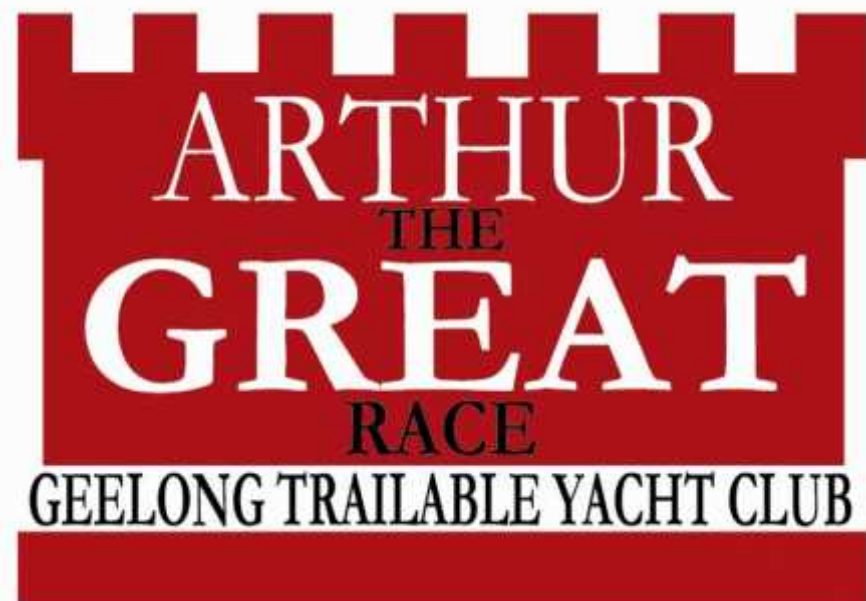


# Sailing Instructions



The organising authority shall be the Geelong Trailable Yacht Club Inc. acting through the Sailing Committee and Race Officials of the Club.

**Saturday**  
**3rd December 2011**



# CONTENTS

1. RULES -----	1
2. ENTRIES-----	1
3. NOTICES TO COMPETITORS -----	1
4. CHANGES IN SAILING INSTRUCTIONS -----	1
5. SIGNALS MADE ASHORE-----	1
6. RACE SCHEDULE-----	1
7. COURSE-----	2
8. THE START -----	2
9. RECALLS -----	2
10. SHORTEN COURSE -----	3
11. THE FINISH -----	3
12. TIME LIMIT -----	3
13. PROTESTS -----	3
14. SCORING-----	3
15. ALTERNATIVE PENALTIES-----	3
16. CANCELLATION/POSTPONEMENT-----	3
17. PRESENTATION AND TROPHIES -----	3
<b>SAFETY REGULATIONS -----</b>	<b>4</b>
<b>GENERAL INFORMATION -----</b>	<b>4</b>
1. Boat Ramps:-----	4
2. Moorings:-----	4
3. Catering:-----	4
4. Race enquiries:-----	4



**Arthur The Great**



**The Cluster**



**The Curlew**



**West Cardinal Mark**

# SAILING INSTRUCTIONS

## 1. RULES

The race will be governed by the International Sailing Federation (ISAF). The 2009–2012 Racing Rules of Sailing (RRS). Special Regulations Part 1, Category 5, the Notice of Race, and by these Sailing Instructions. This event is classified as Category C, in accordance with Racing Rule 79 (Advertising).

## 2. ENTRIES

- a. Eligible yachts may be entered by completing an entry form and lodging it with the GTYC Inc. within the time limit.
- b. Yachts competing shall be as measured for their current CBH and comply with their current respective class rules; should there be non-compliance they shall be disqualified upon protest, unless alterations were declared on the entry form and accepted by the Race Committee.
- c. GTYC Inc. reserves the right to reject an entry.
- d. All those taking part in GTYC Inc races, do so at their own risk and responsibility. The GTYC Inc. is not responsible for the seaworthiness of a yacht whose entry is accepted or the sufficiency or adequacy of its equipment. **Attention is drawn to Fundamental Rules 3 & 4** which state: “By participating in a race conducted under these rules, each competitor and yacht owner agrees. (a) To be governed by the rules. (b) To accept the penalties imposed and other action taken in accordance with rules, subject to the appeal and review procedures provided in them, as the final determination of any matter arising under the rules; and (c) with respect to such a determination, not to resort to any court or tribunal not provided in the rules”. **“The responsibility for a boat’s decision to participate in a race or to continue racing is hers alone”.**

## 3. NOTICES TO COMPETITORS

Notices to competitors shall be posted on the official notice board located at Race Headquarters:-

**It is mandatory that you sign on and off.....and hand your competed Log in as soon as you Finish!**

GTYC Inc Rotunda 150 metres NW from St. Helens boat ramp North Geelong.

## 4. CHANGES IN SAILING INSTRUCTIONS

Any change in the sailing instructions shall be posted before 0830 hours on Saturday December 3rd 2011 at GTYC Inc Race Headquarters.

## 5. SIGNALS MADE ASHORE

Signals made ashore shall be displayed at GTYC Inc Race Headquarters St Helens.

## 6. RACE SCHEDULE

	<b>Warning Signal:</b>	<b>Start Time:</b>	<b>Division Signal:</b>	
Div 1	09.55am	10.00am	Pennant “E”.	<b>0.719 and below</b>
Div 2	10.25am	10.30am	Pennant “F”	<b>0.720 and above</b>

## 7 COURSE

From the Start Line to the North Channel, **leave all Red Marks to Starboard**, (first Red mark approx. 38° 05.757 S 144° 24.767 E) and the **last Green Pile to Port**, to the Artificial Cut Pile (approx. 38° 06.206 S 144° 27.280 E) **leave to Port**, to First Exclusion Zone Mark (approximately 38°6.581S 144°31.678E) **leaving to Port** to the Second Exclusion Zone marker (approximately 38°6.577S 144°33.137) **leaving to Port** then head in a **NORTH direction** to Arthur the Great Floating Yellow Buoy (approx. 38° 04.573 S 144° 33.130 E) **leave to Starboard**, to the previous Exclusion Zone mark **leaving to Starboard**, proceed to the new Cluster pile (approx. 38° 08.131 S 144° 30.112 E) **leave to Starboard**, to Curlewis Pile (approx. 38° 08.238 S 144° 26.627 E) **leave to Starboard**, to Hopetoun Channel passing between markers 3 & 4, 5 & 6, and 7 & 8, to West Cardinal Mark off Cunningham Pier (approx. 38° 08.305 S 144° 22.035 E ) **leave to Starboard**, to the Finish Line off St Helens **leaving the orange buoy to Starboard. (Approx. 26.0NM)**

*PS: There are 3 Exclusion Zone Markers, the 3<sup>rd</sup> one is THE ARTHUR the GREAT which we have received permission to sail around as a mark of the course.*

### WARNINGS:

1. There are a number of shallow water areas over the course, GTYC strongly recommends competitors take heed of the navigational marks and plot a safe course using Chart AUS 157.
2. There is an exclusion zone of approx. 300 metres around the Point Wilson Pier which must be respected.
3. Give way to large boats transiting the CHANNEL

## 8. THE START

- a. The race will be started as follows. Refer Rule 26. Times shall be taken from the visual signal: the failure of a sound signal shall be disregarded.

<b>Warning</b>	Divisional Flag	1 sound	5 minutes
<b>Preparatory</b>	Code flag P, I, Z, black flag	1 sound	4 minutes
<b>Preparatory signal removed</b>		1 sound	1 minute
<b>Start</b>	All flags removed	1 sound	0 minute

- b. The starting line will be to the North East of the St Helens boat harbour between a staff displaying the GTYC Inc. Burgee (Yellow and Blue) on the Race Committee boat at the starboard end and an orange drum buoy marked GTYC at the port end.
- c. A safety or crowding buoy may be laid a short distance from the starting vessel, but not necessarily exactly on the line, no yacht shall pass between this buoy and the starting vessel at any time.
- d. Yachts whose warning signal has not been made shall keep clear of the starting area and of all yachts whose warning signal has been made.

## 9. RECALLS

Individual recalls, and General recalls, will be signalled in accordance with RRS 29.1, and 29.2, respectively.

## 10. SHORTEN COURSE

Will be signalled in accordance with RRS rule 32. Finish directly between the committee boat and the nearby mark.

## 11. THE FINISH

- a. The Finish Line shall be between the St.Helens Mark (orange drum buoy marked GTYC) located up to 150 metres seaward of the St.Helens boat harbour and the Flagstaff flying the GTYC Burgee on the rock wall to the West of the entrance. **Leave the Orange buoy to Starboard.**
- b. Yachts are requested not to recross the Finish Line, and keep clear of finishing boats.

## 12. TIME LIMIT

- a. All competitors shall cease racing at 1800 hours. Yachts that have not crossed the finish line by this time will be recorded as "Did Not Finish".

## 3. PROTESTS

Will be accepted in terms of RRS Rule 60.

- a. Protests shall be written on forms available at Race Headquarters; and lodged there within one hour after the time of the last yacht's finish together with a deposit of \$10.00.
- b. Protest notices will be posted at Race Headquarters, St Helens, within 30 minutes of the protest time limit to inform competitors there is a hearing to which they are a party or named as witnesses. This shall constitute official notice to all parties.
- c. Protests shall be heard in approximately the order of receipt at the Geelong Trailable Yacht Club Rotunda commencing at 1030 hours on Sunday 4th December 2011, or earlier by mutual agreement.

## 14. SCORING

- a. Y.V. Class Basic Handicaps current at race date to apply.
- b. Provisional results will be displayed at Race Headquarters as early as possible. Final results will be emailed to all competitors as soon as practicable.

## 15. ALTERNATIVE PENALTIES

RRS Rule 44 of the Racing Rules specifies alternate penalties for infringing Rules of Part 2.

## 16. CANCELLATION/POSTPONEMENT

Will be signalled in accordance with RRS Rule 27.3. In the case of adverse weather the Postponement or Abandon and Re-sail signal shall be flown. This shall be notification to all competitors that the race shall be re-sailed on Sunday 4th December 2011, weather permitting.

## 17. PRESENTATION AND TROPHIES

Presentation of trophies will be made at the GTYC Rotunda on the North West side of St Helens boat harbour as soon as possible after the event.

**Division 1                    1<sup>st</sup>    2<sup>nd</sup>    3<sup>rd</sup> Places                    on CBH    0.719 and below**

**Division 2                    1<sup>st</sup>    2<sup>nd</sup>    3<sup>rd</sup> Places                    on CBH    0.720 and above**

**Perpetual Trophy on CBH overall**

# SAFETY REGULATIONS

The race will be governed by the International Sailing Federation (ISAF), the 2009–2012 Racing Rules of Sailing (RRS), Special Regulations Part 1, Category 5, the State Boating Regulations, the Notice of Race, and by these Sailing Instructions.

The following shall also apply:-

1. Competing yachts may be inspected for compliance with the safety regulations.
2. Crew shall be at least one adult and one person over 14 years of age.
3. No trapeze allowed.
4. **Yachts retiring** should notify a race official as soon as possible on the same day as the race. Advice can be radioed to Race Headquarters VH3 ABD, 0422 131582 or Even Keel GTYC Race Committee boat.
5. The appropriate Admiralty Chart is AUS 157 and should be carried.
6. **Crews of yachts without lifelines to wear buoyancy vests or life jackets at ALL times whilst on the water.**
7. **The Race Committee recommends that yachts should race with storm boards fitted and that all crews wear a PFD if the wind rises above 20/25 knots and/or reefing is required.**
8. Skippers shall **sign on** prior to starting at Race Headquarters to rank as a starter.
9. Skippers shall **sign off** at St Helens Race Headquarters within one hour of the last boat finishing. Signing off in the appropriate manner shall be a declaration of observance of the rules. Yachts may sign off by radio through VH3 ABD, or. 0422 131582
10. Race logs must be submitted when signing off. See below
11. Weather reports are available from Geelong Coast Guard VMR368, Race HQ GTYC Rotunda VH3 ABD and commercial radio 93.9 Bay-FM.
12. Skippers are reminded of RRS Fundamental Rule 1.1 Helping Those in Danger. Time so lost may be claimed at the finish. RRS rule 62.1 and 62.2.
13. Radio frequency for race to be – Calling on VHF 16 and then to VHF 74 for working or a channel as advised by the called station.

# GENERAL INFORMATION

1. **Boat Ramps:**
  - a. St Helens (ramp fee applies) – has excellent parking facilities. Turn east off the Melbourne (Geelong) Road into Swinburne Street North Geelong (Just before the North Geelong Station) “NEW DEEP RAMPS”
  - b. Limeburners. – To the east of Eastern Beach Geelong. Good ramp with good parking.
  - c. Clifton Springs – good ramp in sheltered harbour, access requires care at low tide.
  - d. Pt Richards – concrete triple ramp. Good all weather, enter from west of Pt Richards Pile – take care at low tide.

**RETRIEVAL AT ST HELENS AND OTHER RAMPS IS IN TRAILER ORDER AND MAY BE CONTROLLED BY GTYC OFFICIALS. PLEASE FOLLOW THEIR INSTRUCTIONS.**

2. **Moorings:**
  - a. St Helens – sheltered moorings available behind extended rock wall.
  - b. Royal Geelong Yacht Club/ Bay City Marina - moorings available in pens at a charge. Contact Marina Manager, on (03) 5229 0799 to arrange.
3. **Catering:**
  - a. Saturday afternoon – BBQ available prior to Presentation at GTYC Rotunda (short walk from boat ramp).
4. **Race enquiries:**

**Club Captain:** Jim Bland    0408 546193    (03) 52770207

**THIS must be handed in at race headquarters as soon as you have finished...  
NOT AFTER YOU HAVE DE- RIGGED.....**

## RACE LOG

Sail Number: ..... Skipper:.....

Boat Name: .....

Mark of Course	Time	Nearest Boat Name/Sail No.
North Channel		
Artificial Cut Pile		
Arthur the Great		
New Cluster Pile		
Curlewis Pile		
Hopetoun Channel- Start		
Hopetoun Channel- End		
West Cardinal Mark		
Finish		

**SUBMISSION OF RACE LOG IS MANDATORY.**

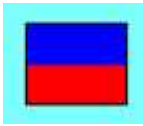
**FAILURE TO SUBMIT WILL INCUR DISQUALIFICATION.**

“Sign Off” and lodge this Log at Race HQ.

If “Signing Off” by phone, or radio mail this Race Log to the address shown below by 9th December 2011.

For race enquiries contact: Geelong Trailable Yacht Club Inc.  
P. O. Box 899 Geelong 3220  
Phone (03) 0408 546193

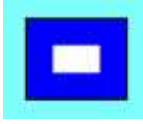
---



**Code Flag E (Division 1)**



**Code Flag F (Division 2)**



**Code Flag P (Hoisted at 4 Min and Lowered at 1 Min)**



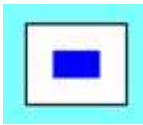
**No 1 (Course 1)**



**No 2 (Course 2)**



**Code Flag X (Individual Recall, followed 1 Sound)**



**Code Flag S (Shortened Course)**



**Code Flag N Racing abandoned**



**Code Flag A (Flag N over A No further Racing Today)**



**Code Flag B (Raised if Boat Protesting)**



**Code Flag (Finish Line)**

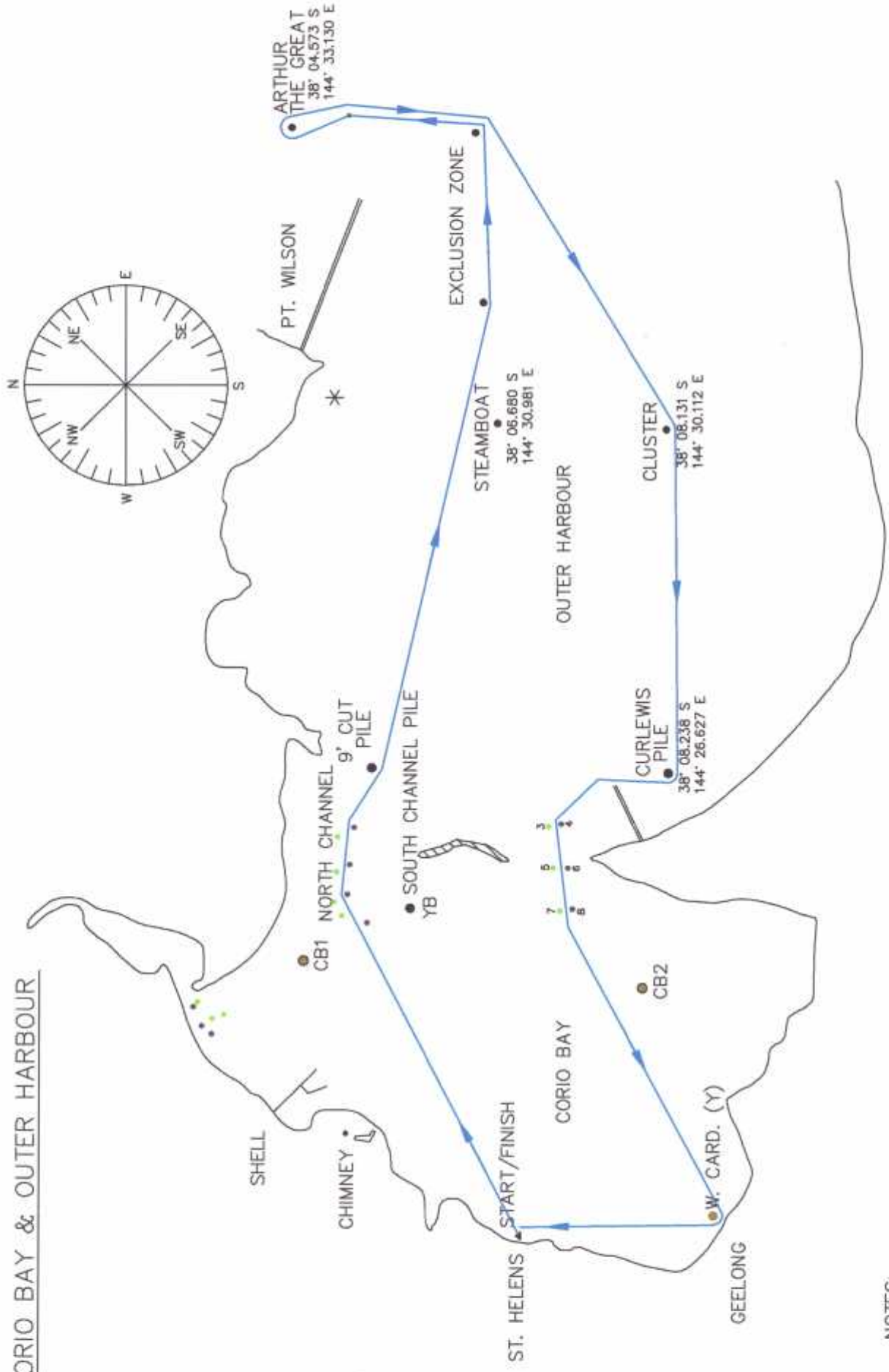


**Code Flag Y (All Competitors Shall Wear an Approved Life Jacket)**



**Code Flag AP (Postponement)**

CORIO BAY & OUTER HARBOUR



NOTES:  
 1. THIS DIAGRAM SHOULD NOT BE USED FOR NAVIGATION PURPOSES.  
 THE APPROPRIATE CHARTS ARE AUS 143 & AUS 158.